
How to Install Windows XP for MID P8880



Version: 1.0

www.aigo.com



Menu

1. Hardware preparation and connection	5
1.1 Hardware preparation	5
1.2 Connect with USB Hub	5
2. Windows XP Installation	6
3. Drivers Installation	7
3.1 To install SSD speed up software	7
3.2 To install Chipset driver	10
3.3 To install Video driver	14
3.4 To install Audio driver	18
3.5 To install the PC camera driver	21
3.6 To install the USB port driver	24
3.7 To install the Touch Screen driver	27
3.8 To install SmartKey application software	30
3.9 To adjust the resolution of screen	33
3.10 To fit the screen setting	35
3.11 To load the SmarkKey application software	38
3.12 To install the WiFi driver	40
3.13 To install the 3G (WCDMA/HSDPA) driver	44
3.14 To install GPS driver	48



1. HARDWARE PREPARATION AND CONNECTION

1.1 HARDWARE PREPARATION

Before the installation, you need to prepare:

- USB Hub
- USB CD-ROM (USB DVD-ROM)
- USB Keyboard
- USB Mouse
- Windows XP Installation CD
- MID P8880 Driver CD

1.2 CONNECT WITH USB HUB

To connect USB Hub with MID, and connect USB CD-ROM, USB Keyboard and USB mouse with USB Hub.

2. WINDOWS XP INSTALLATION

To put Windows XP Installation CD into USB CD-ROM, and install Windows XP step by step.

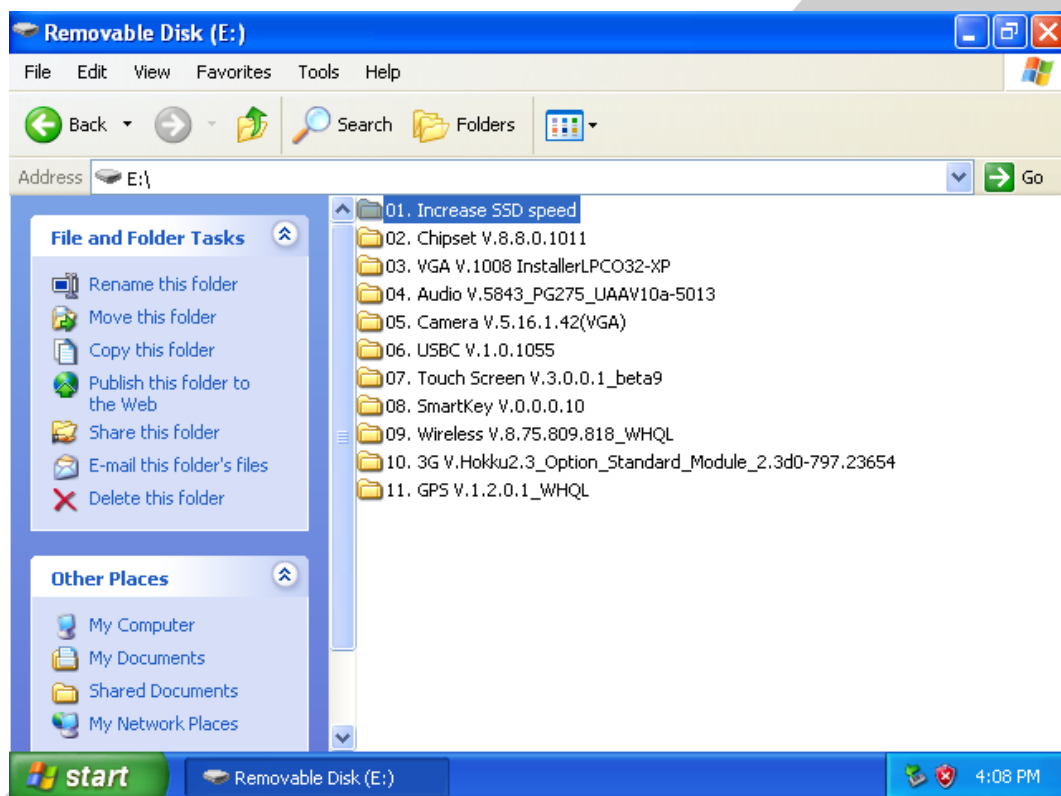


3. DRIVERS INSTALLATION

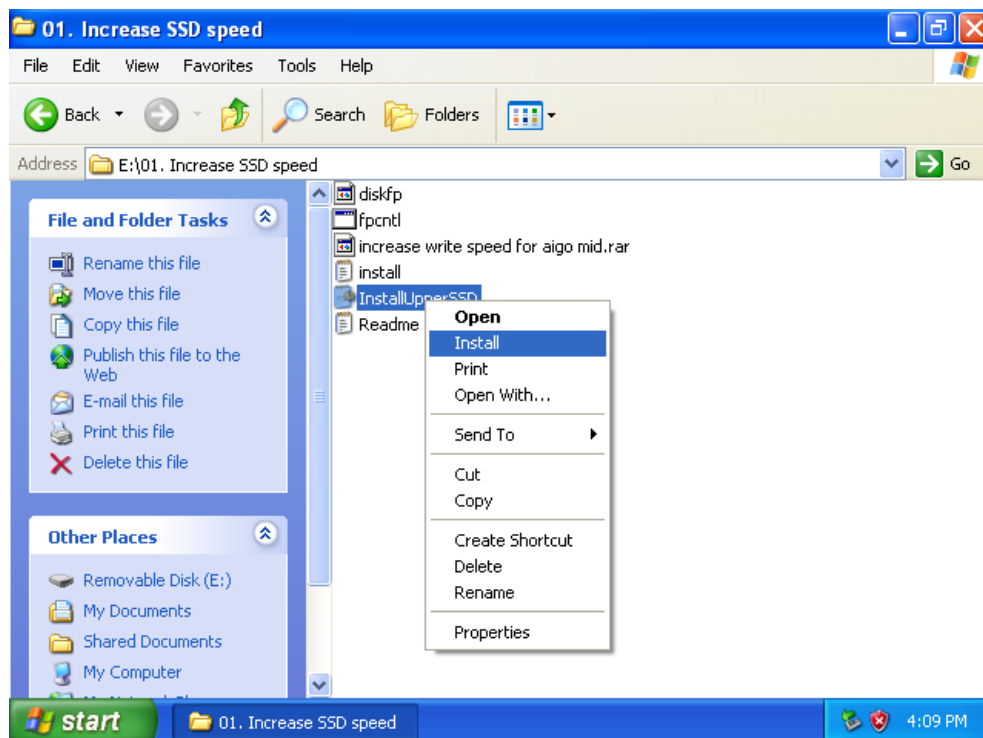
To put the MID P8880 Driver CD into USB CD-ROM, and install drivers.

3.1 TO INSTALL SSD SPEED UP SOFTWARE.

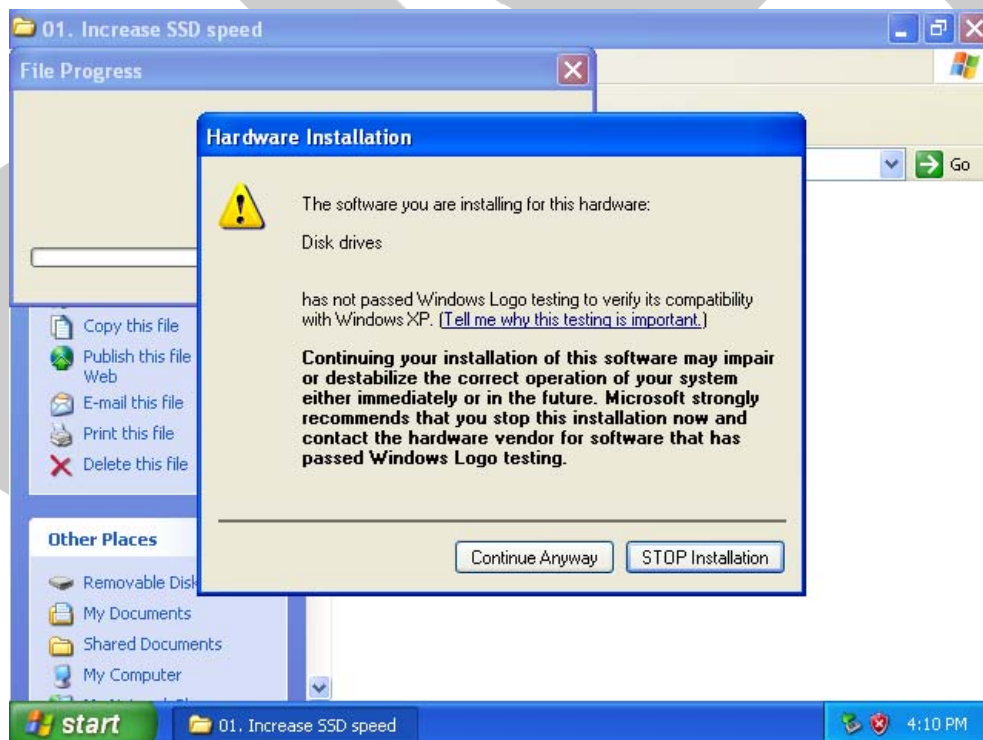
- Choose “01. Increase SSD speed ”



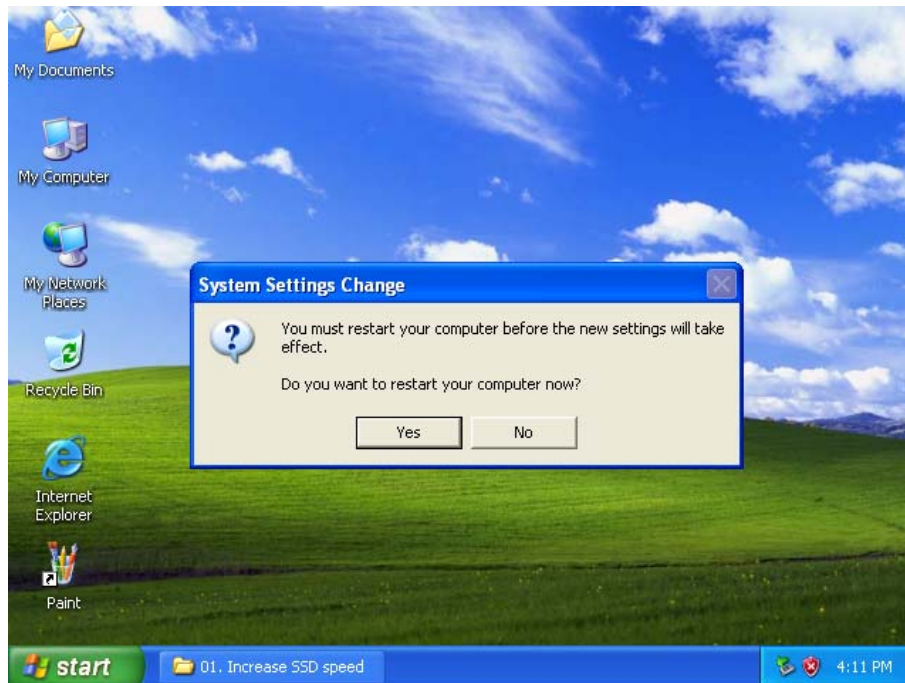
- Choose “InstallUpperSSD”, click the right button of mouse, and choose “Install”



- Choose “Continue Anyway”



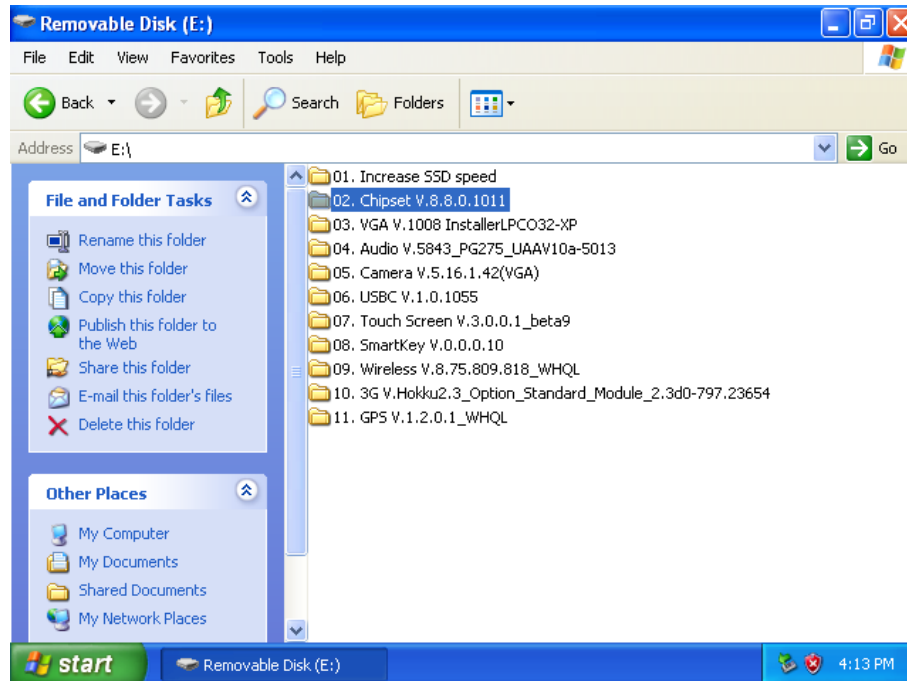
- Choose “”, and restart your MID.



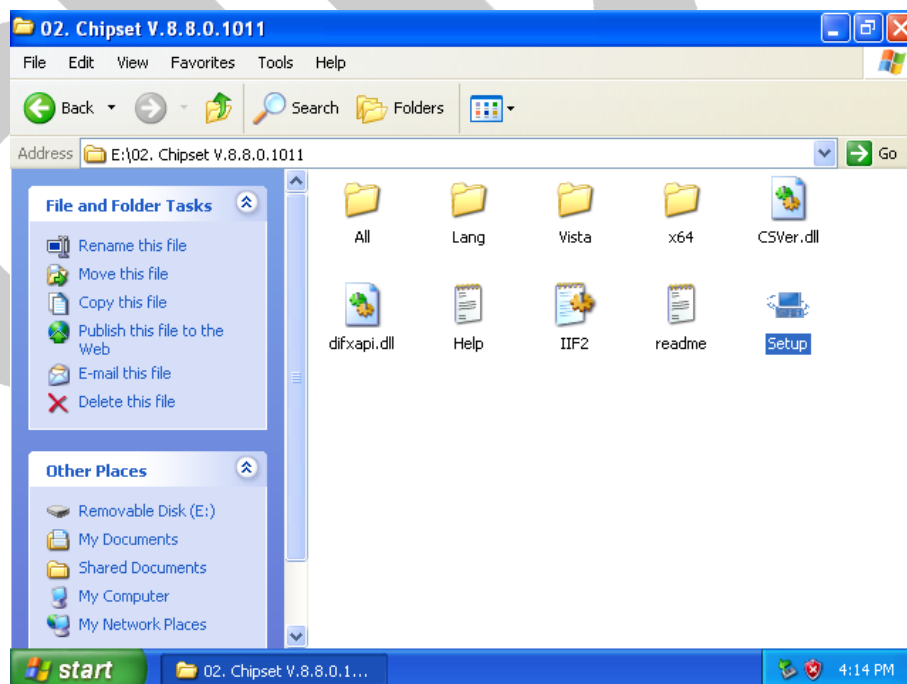
You need to restart your MID here.


3.2 TO INSTALL CHIPSET DRIVER

- Choose “02. Chipset V.8.8.0.1011”

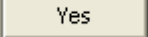


- Select “Setup”



- Select “  ”



- Select “  ”



- Select “”



- Select “”



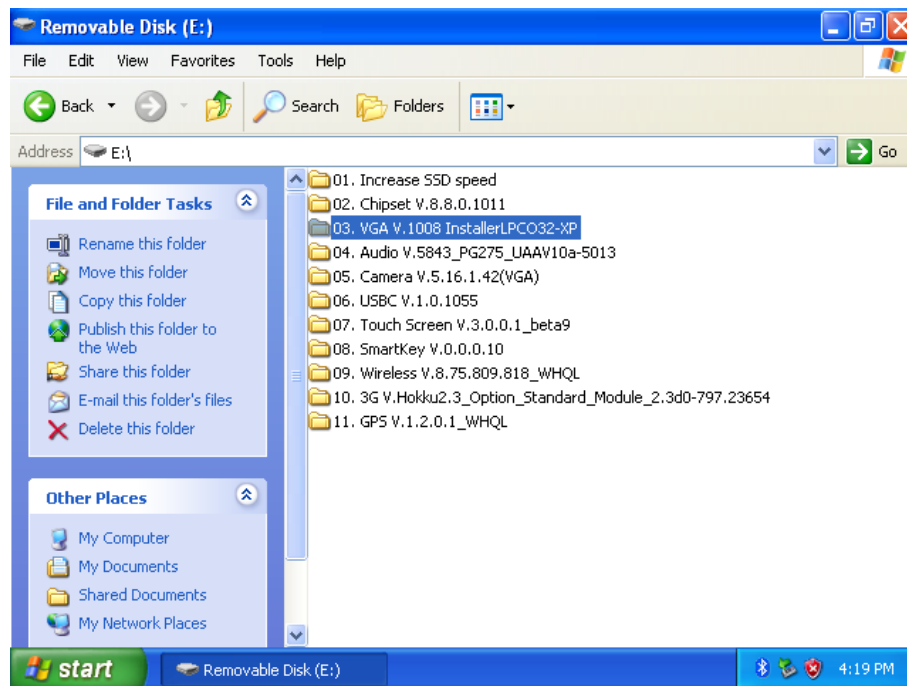
- Select “ ☒ No, I will restart this computer later. ”

Choose “  ”

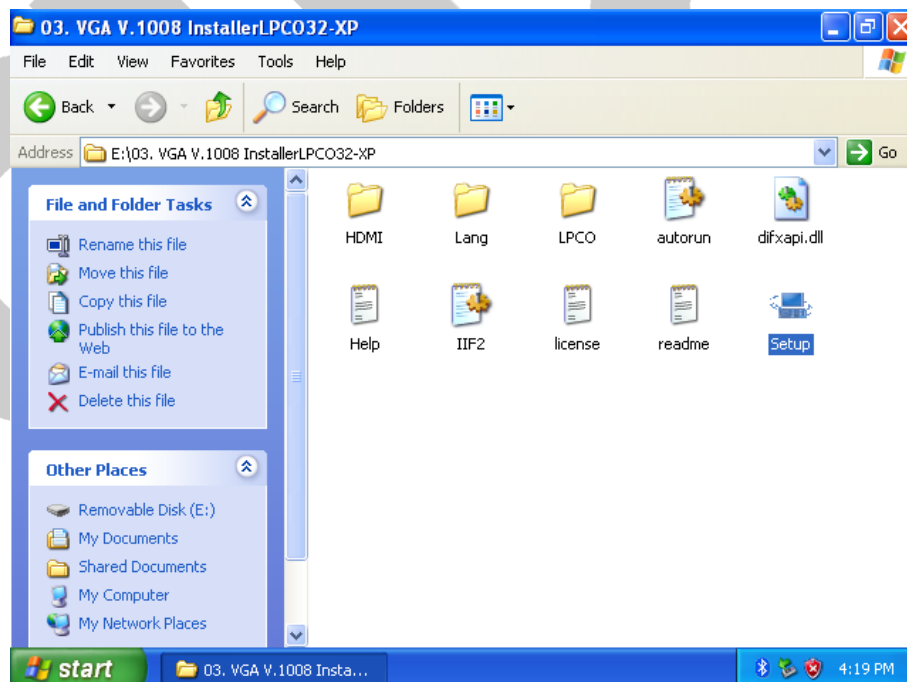


3.3 TO INSTALL VIDEO DRIVER

- Choose “03. VGA V.1008 InstallerLPC032-XP”



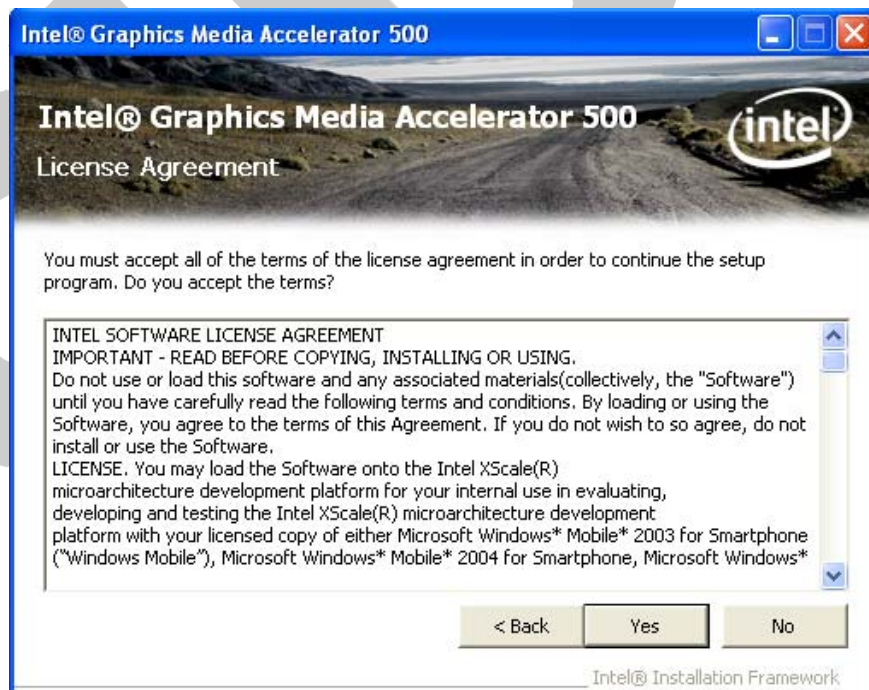
- Select “Setup”



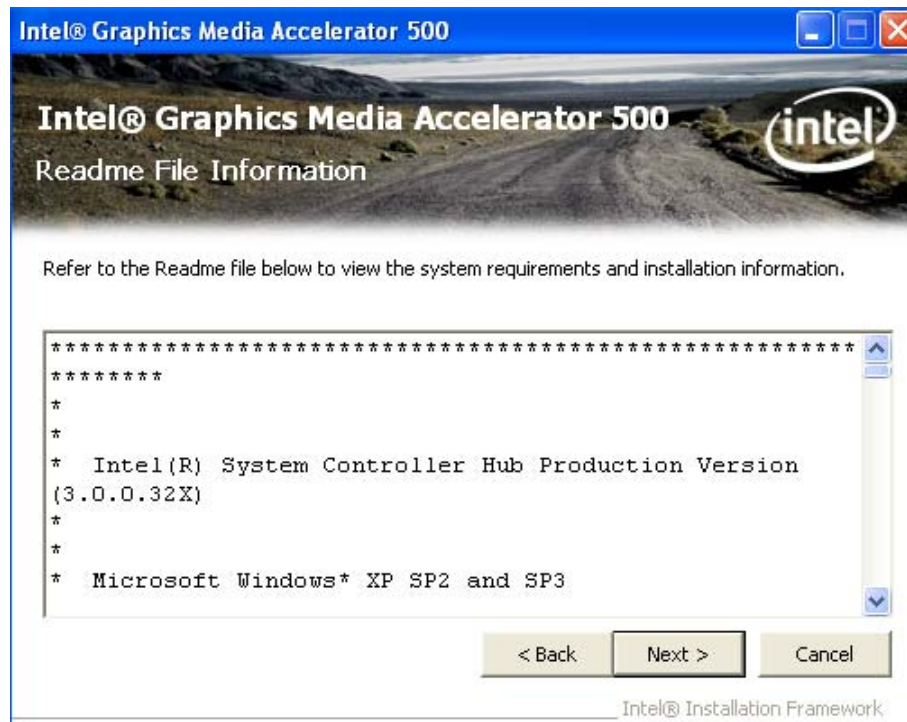
- Select “”



- Select “”



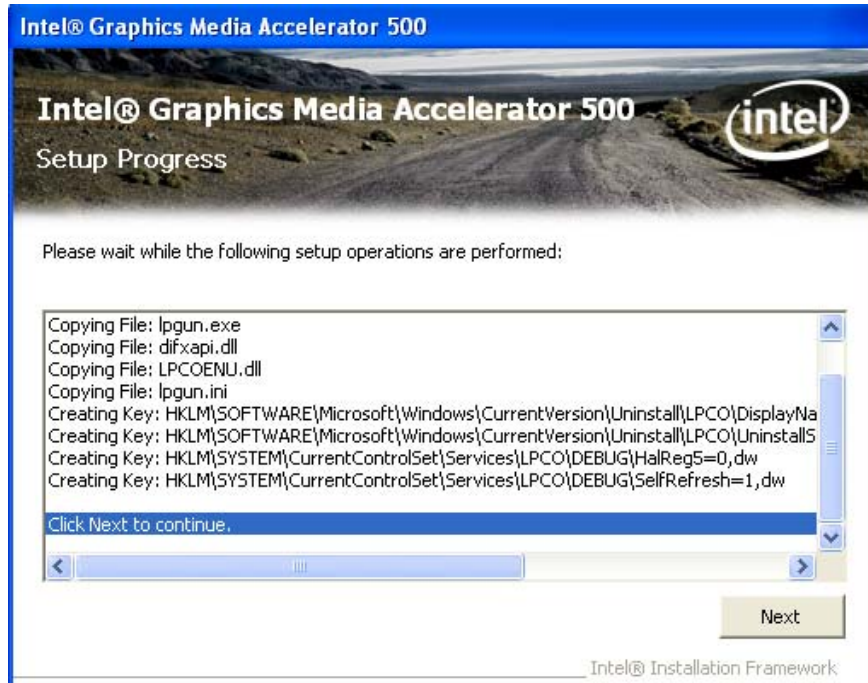
- Select “”



- Select “”



- Select “  ”

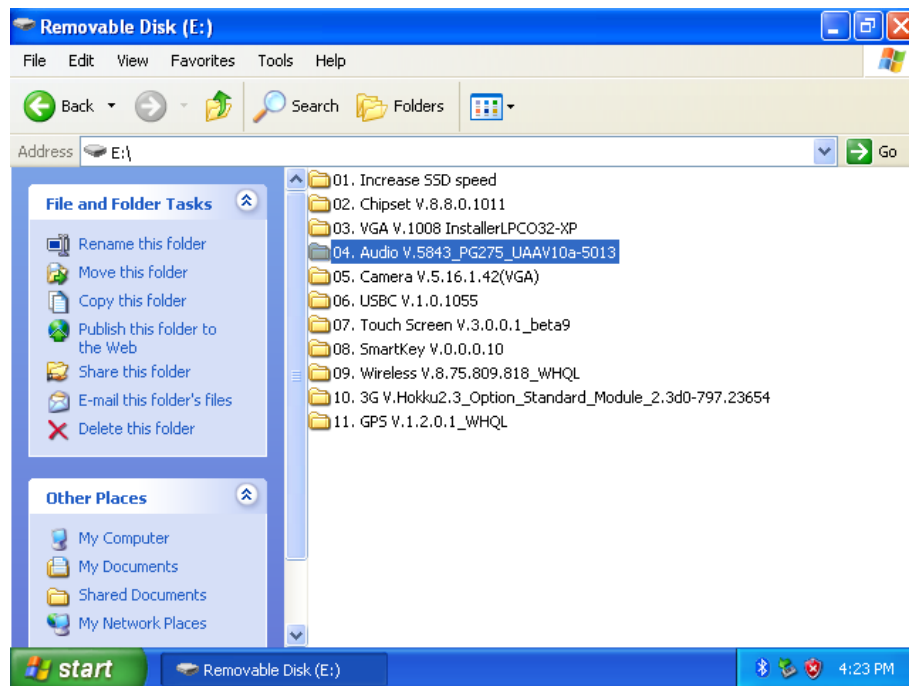


- Select “ ☒ No, I will restart this computer later. ”, and Choose “  ”

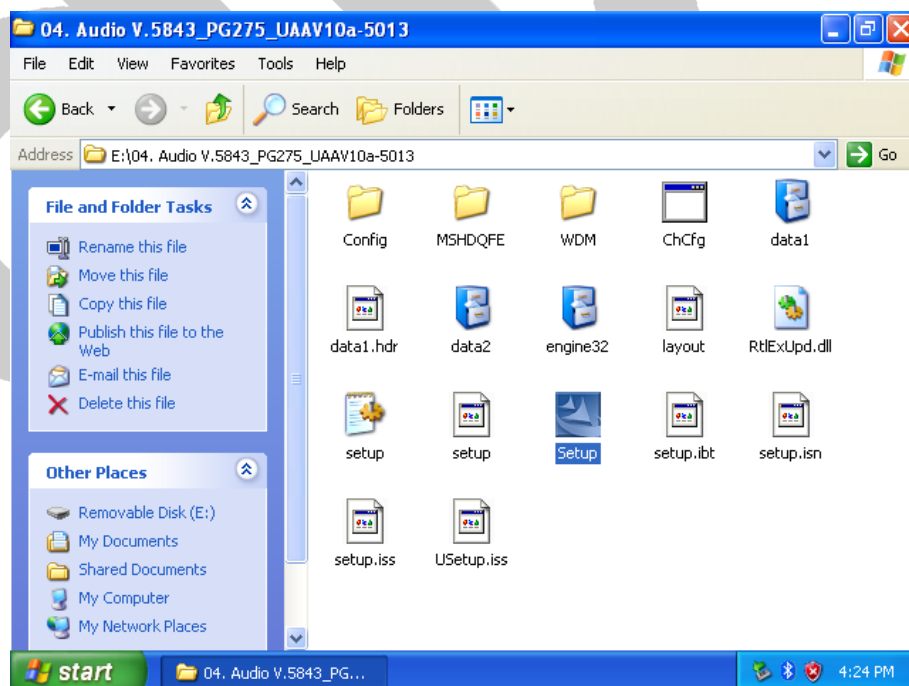


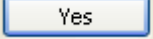
3.4 TO INSTALL AUDIO DRIVER

- Choose “04. Audio V.5843_PG275_UAAV10a-5013”



- Select “Setup”



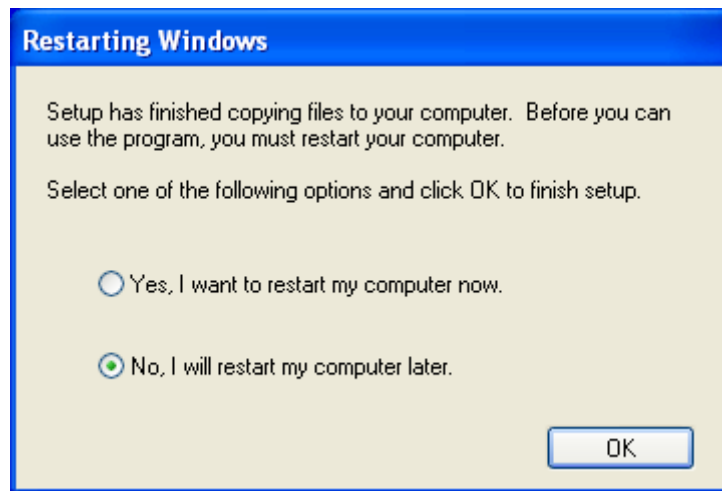
- Select “  ”



- Select “  ”

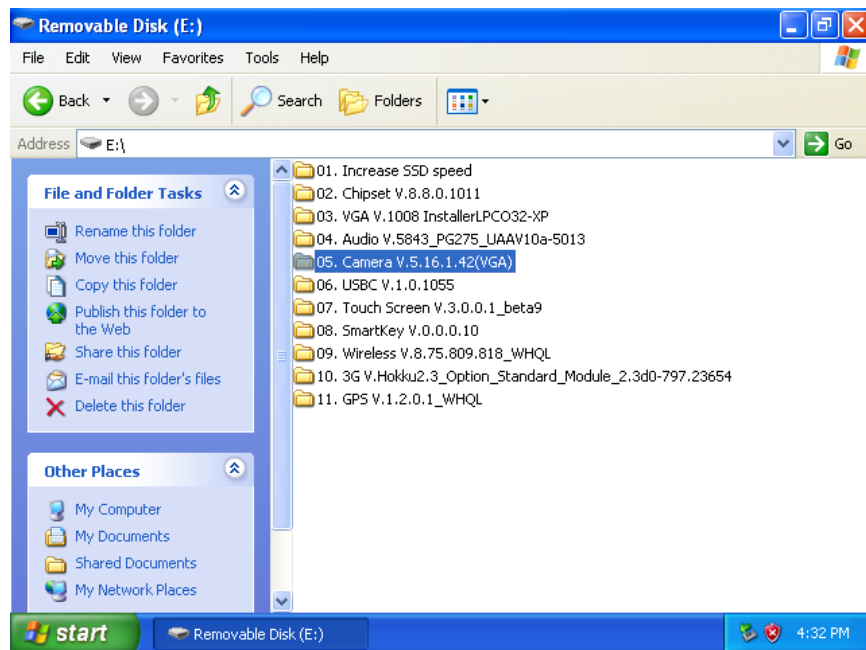


- Select “ ☒ No, I will restart my computer later. ”, and choose “ ”.

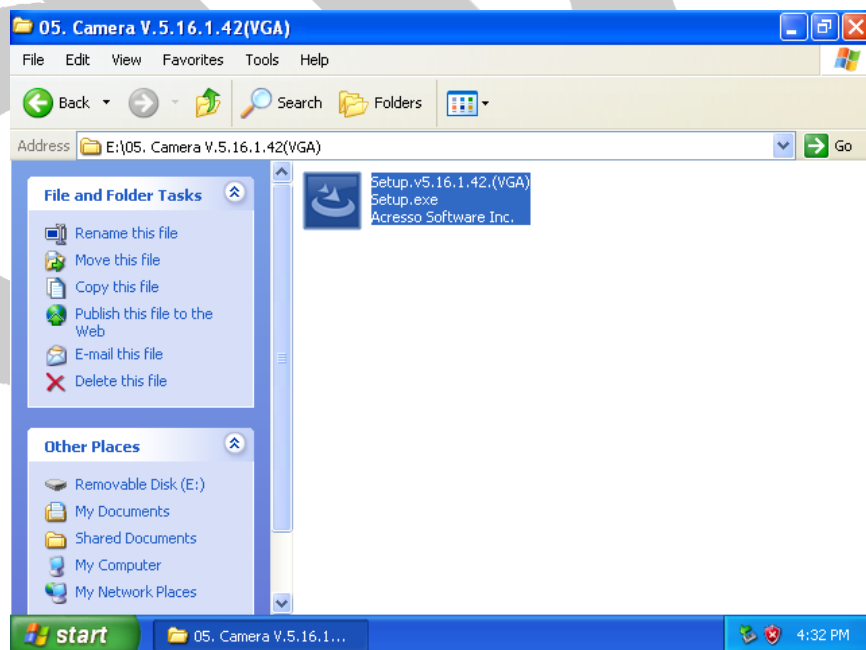


3.5 TO INSTALL THE PC CAMERA DRIVER

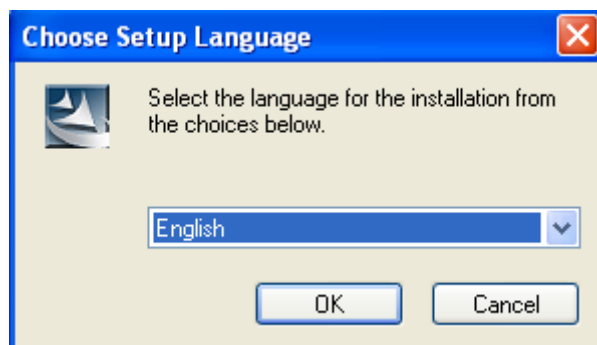
- Choose “05. Camera V.5.16.1.42(VGA)”




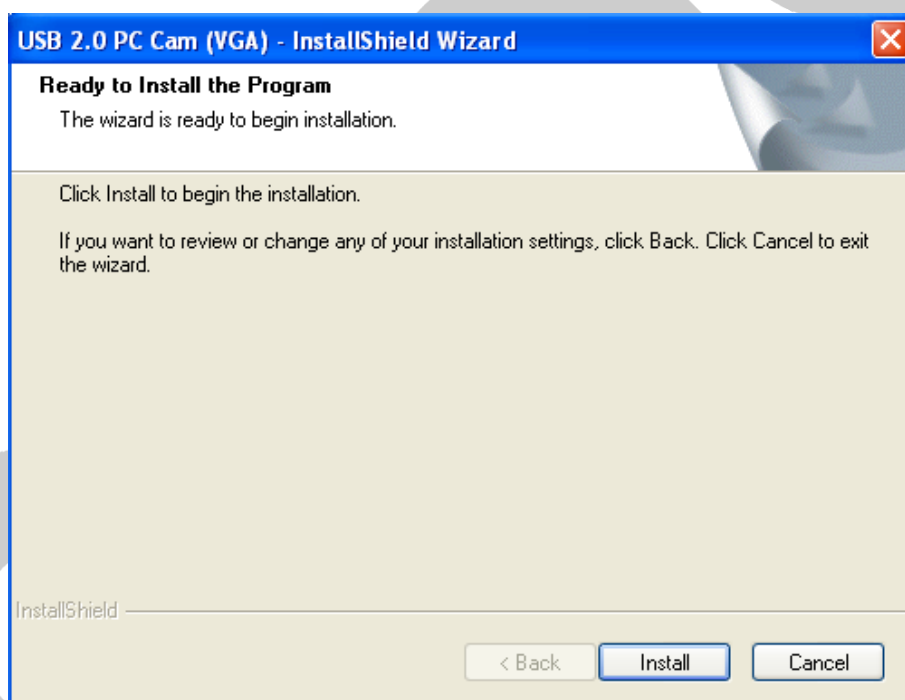
- Select “Setup.v5.16.1.42.(VGA) Setup.exe Accessro Software Inc.”



- Select a language as “English”



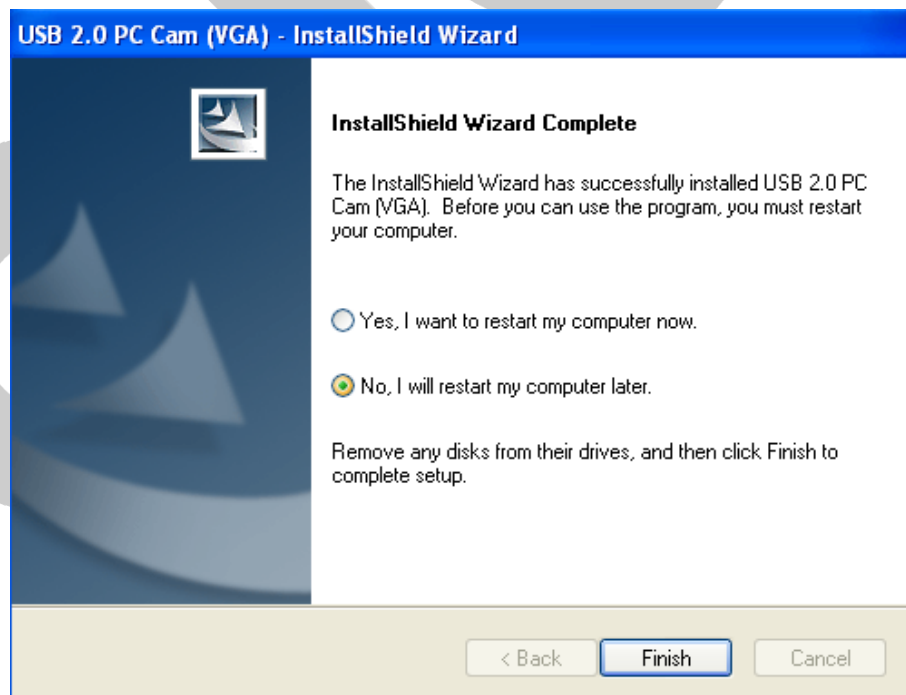
- Choose “”



- Choose “  ”

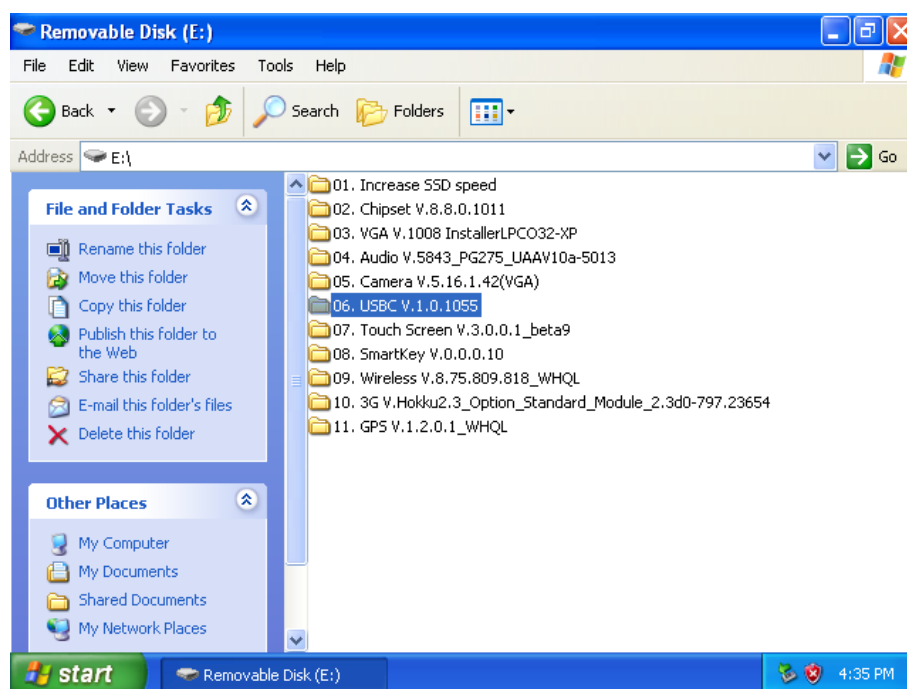


- Select “  No, I will restart my computer later. ”, and Choose “  ”

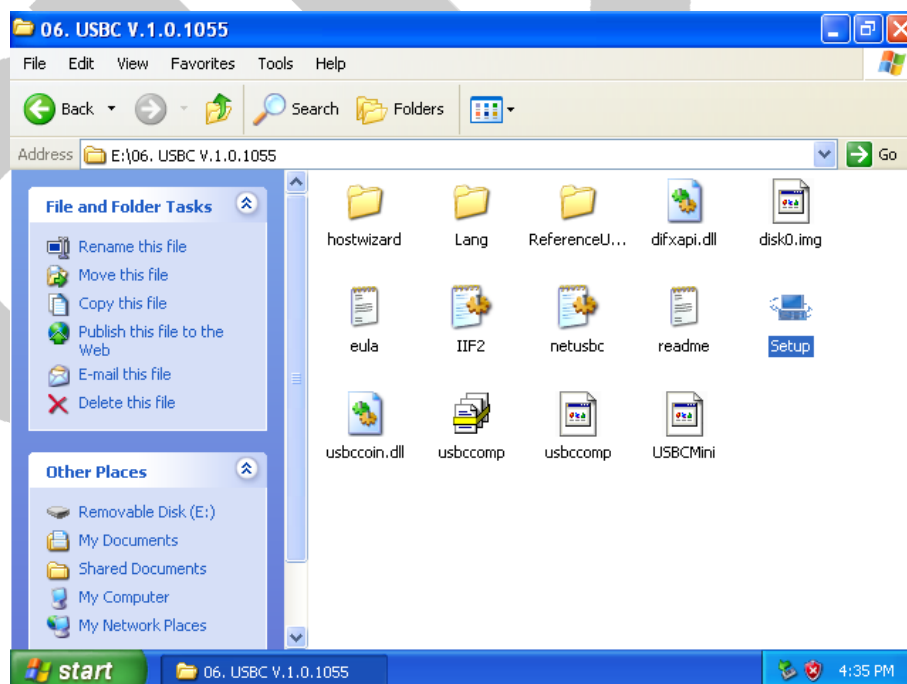


3.6 TO INSTALL THE USB PORT DRIVER

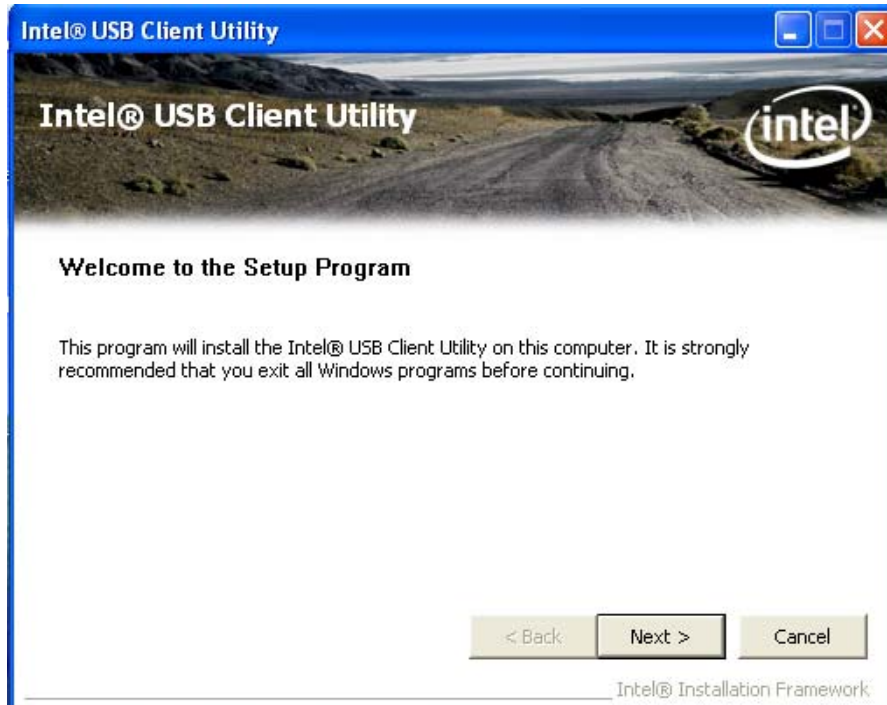
- Select “06. USBC V.1.0.1055”



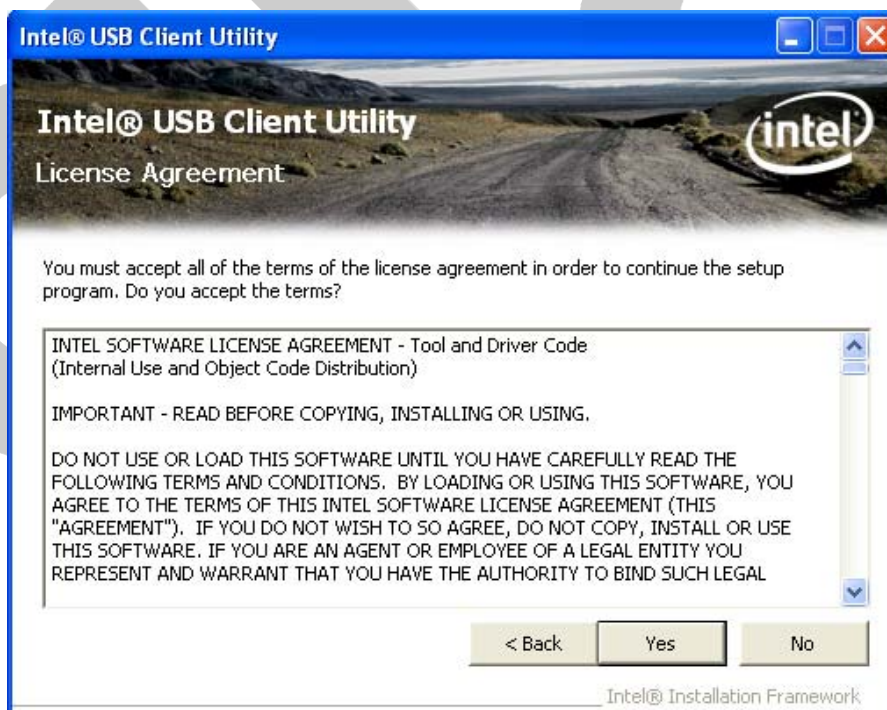
- Choose “Setup”

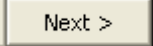


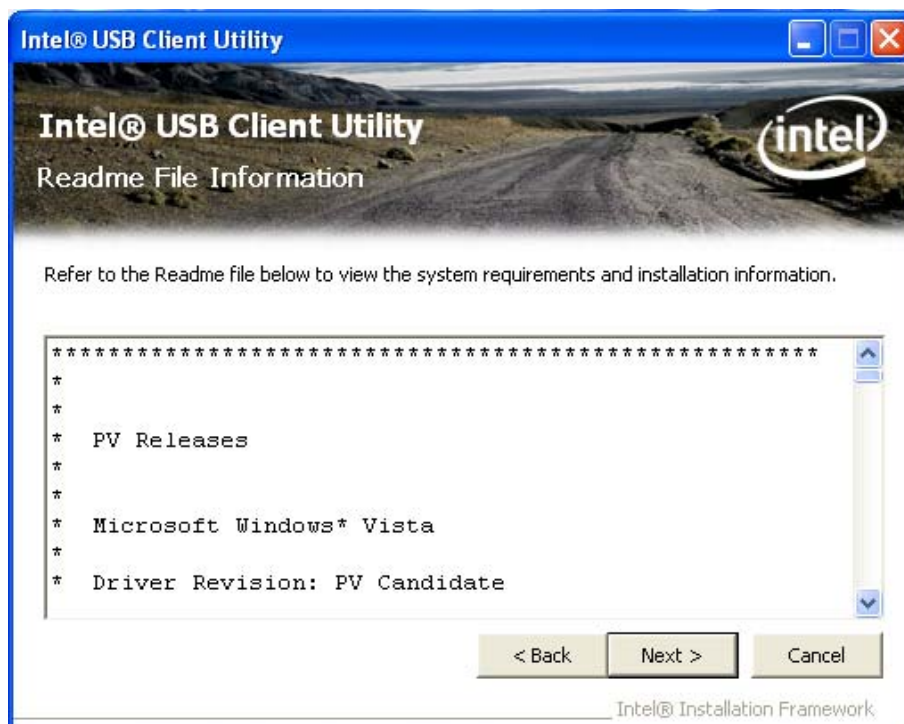
- Select “”



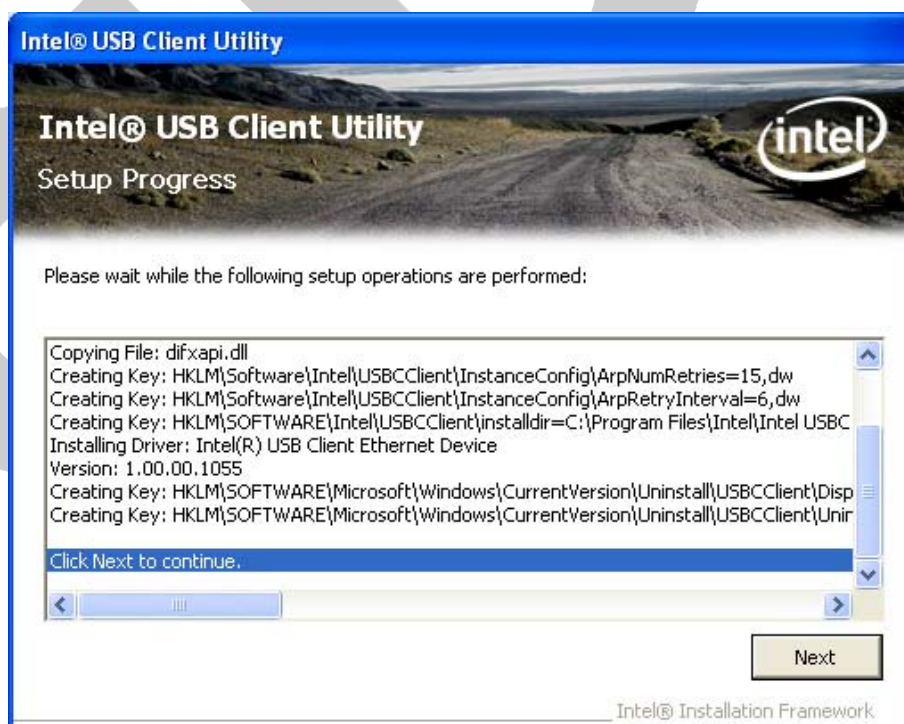
- Select “”



- Select “”

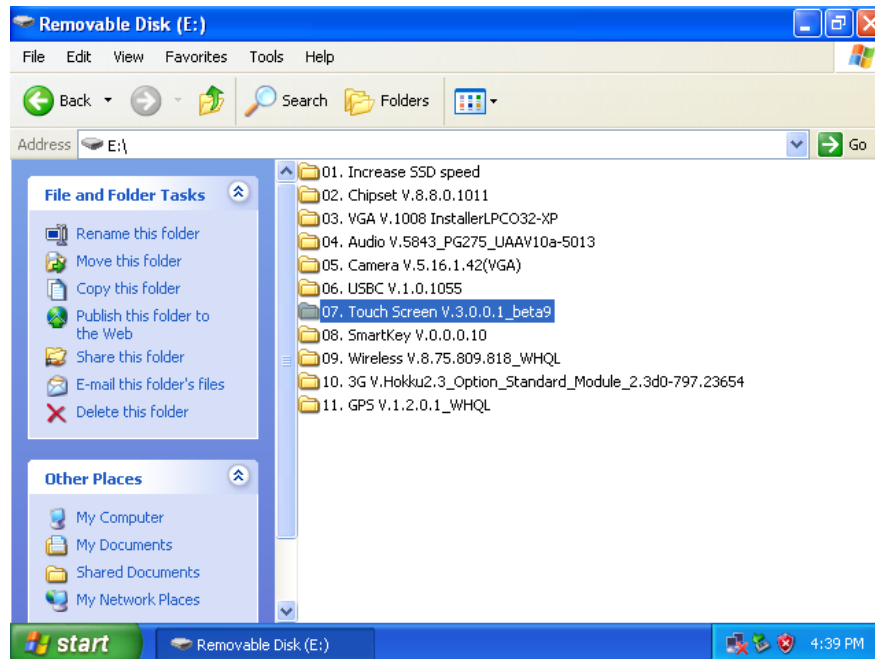


- Choose “”

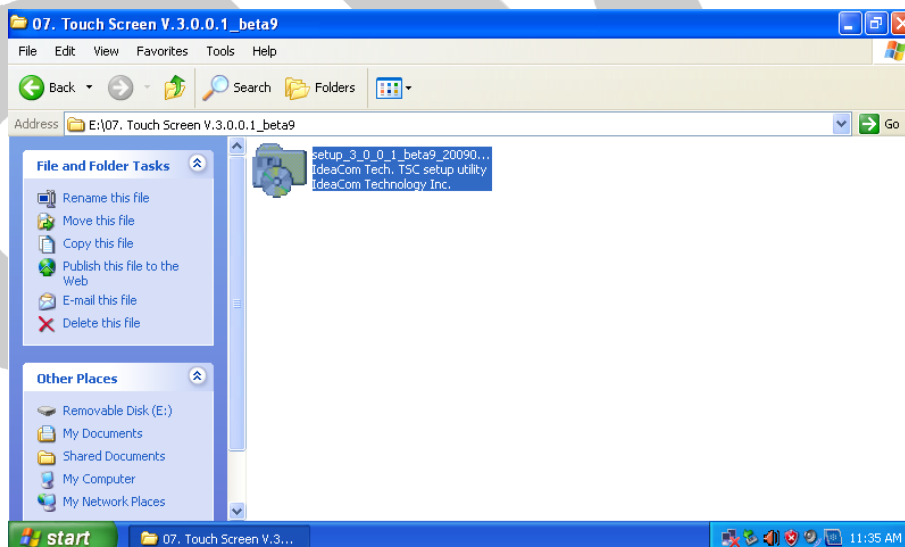


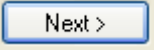
3.7 TO INSTALL THE TOUCH SCREEN DRIVER

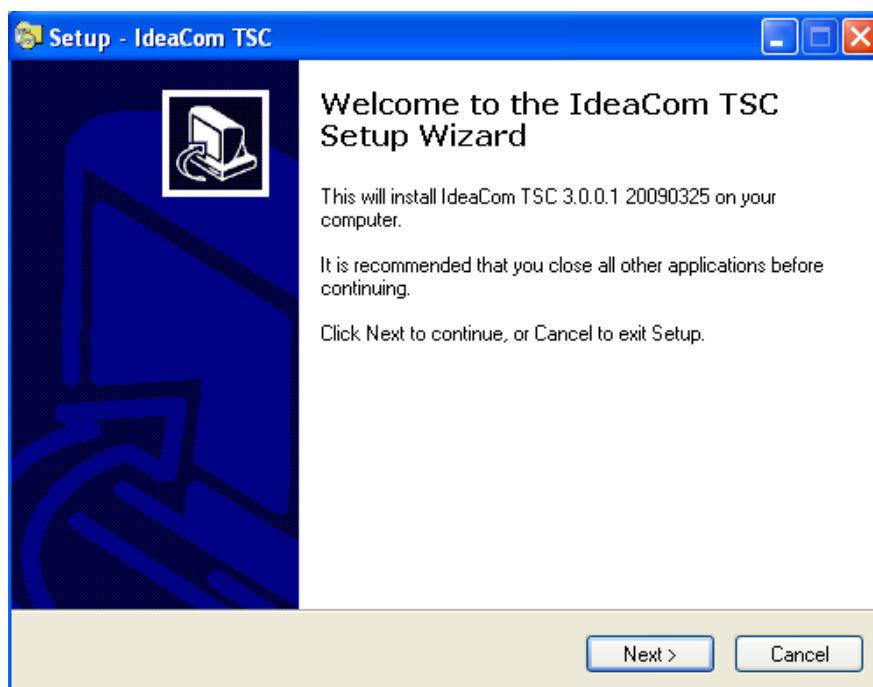
- Choose “07. Touch Screen V.3.0.0.1_beta9”

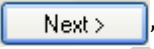


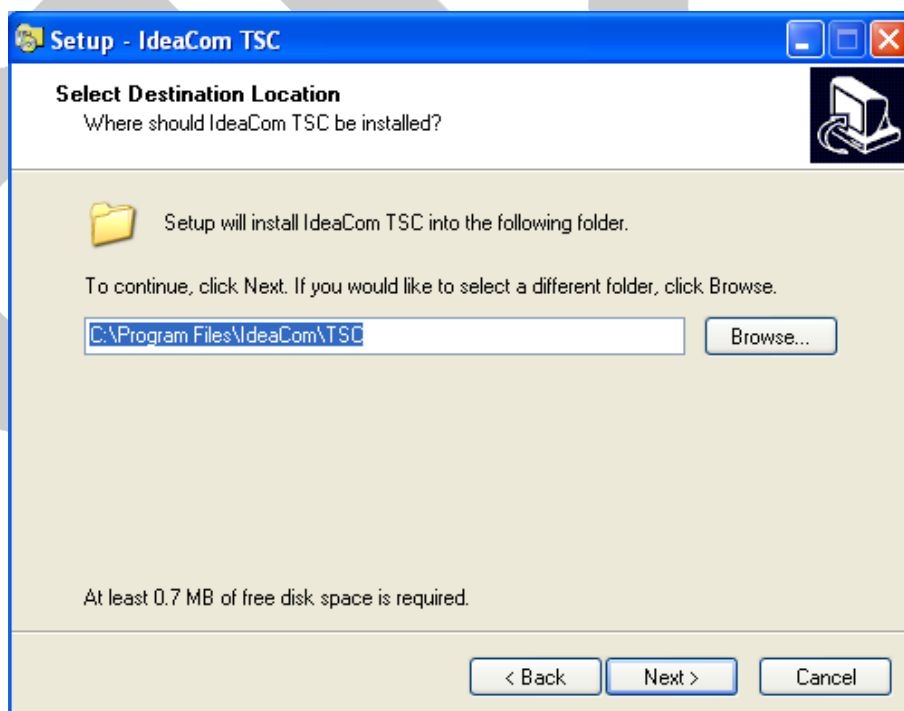
- Select “setup_3_0_0_1_beta9_20090...
IdeaCom Tech. TSC setup utility
IdeaCom Technology Inc.”

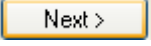


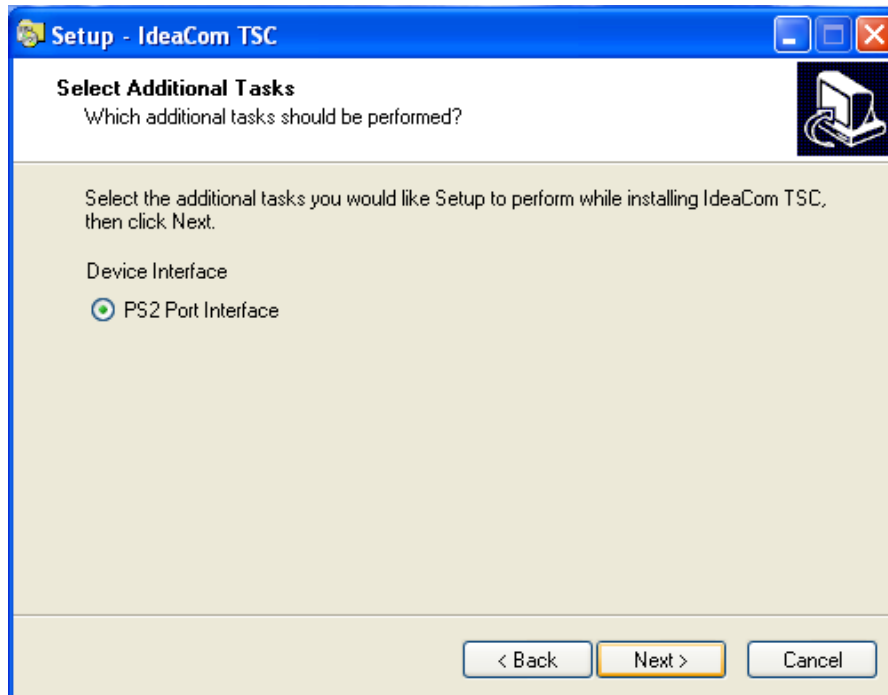
- Choose “”

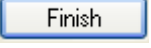


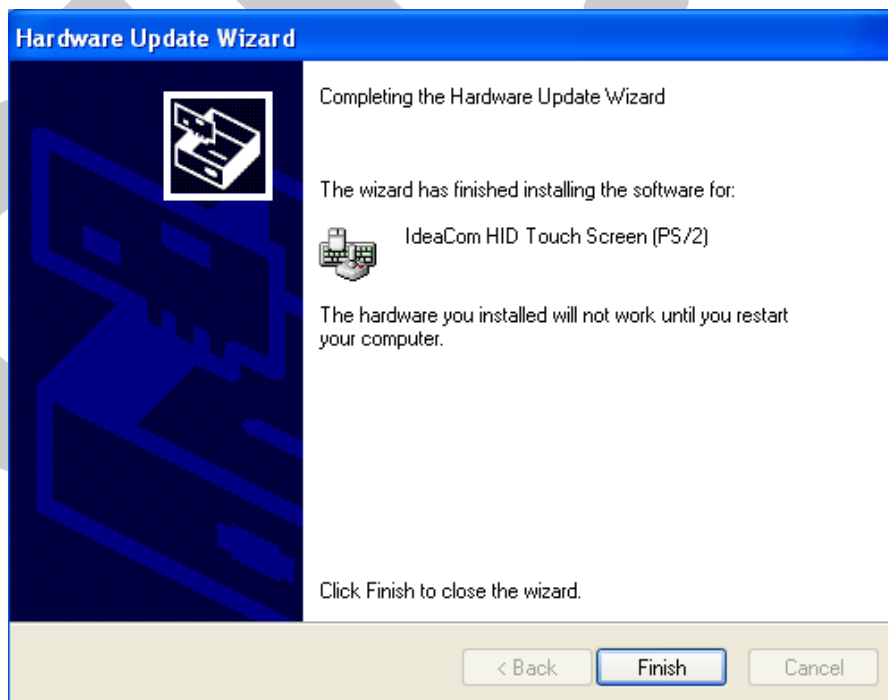
- Select “”

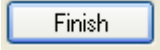


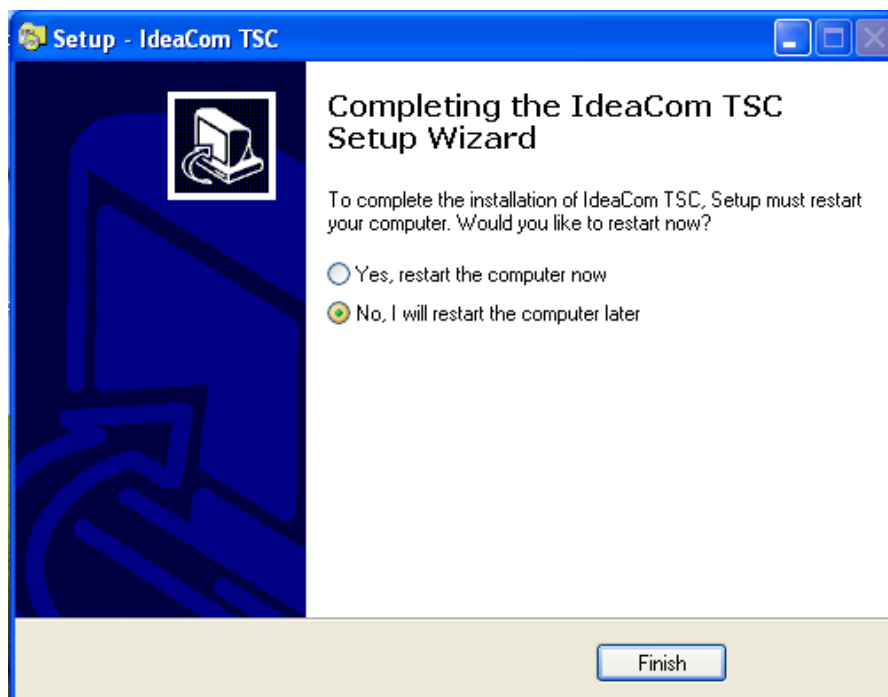
Select “  ”




Choose “  ”

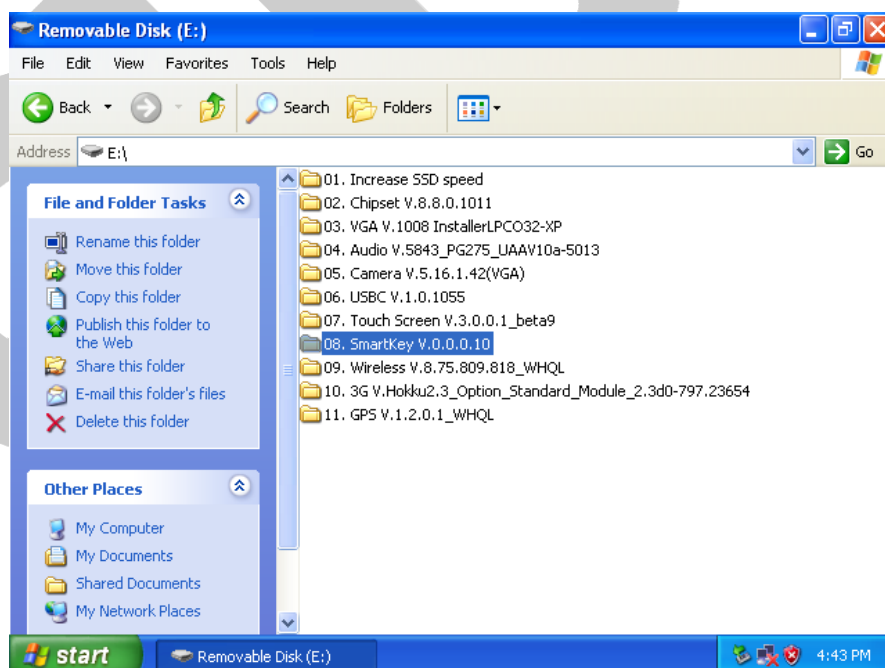


Select “  ”



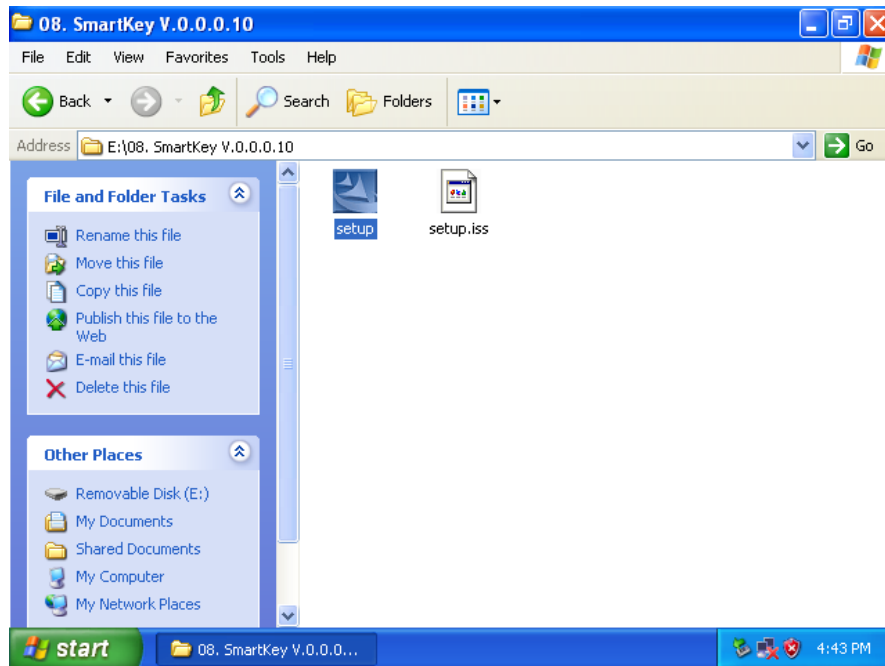
3.8 TO INSTALL SMARTKEY APPLICATION SOFTWARE

➤ Select “  ”

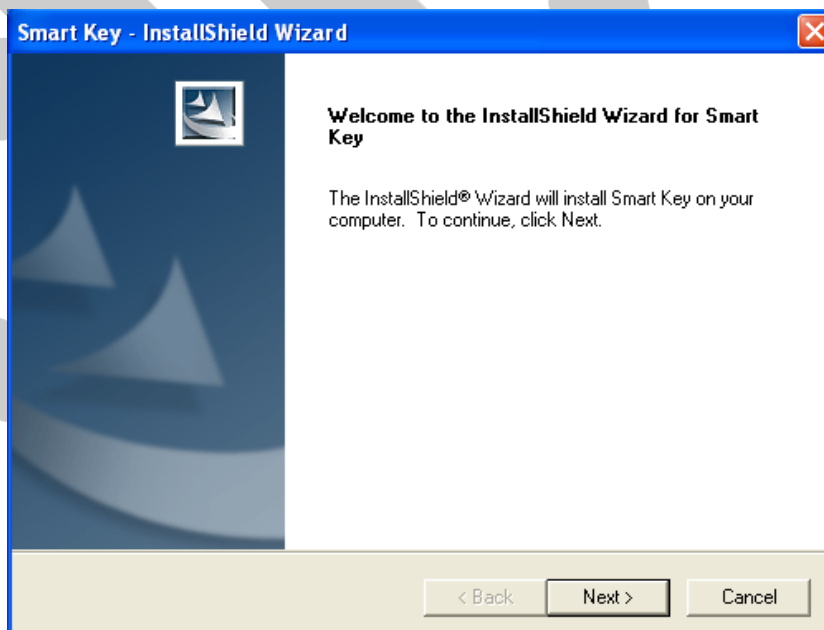




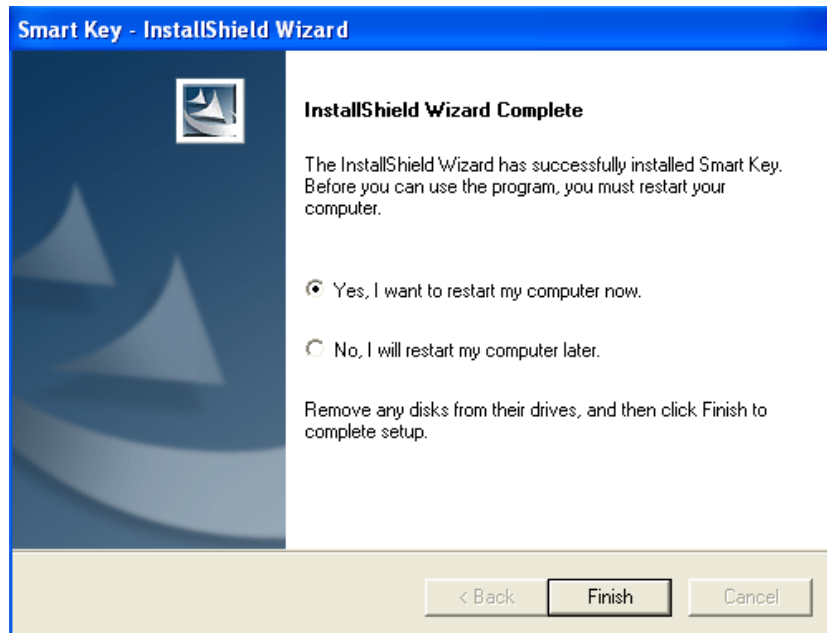
➤ Choose “



➤ Choose “



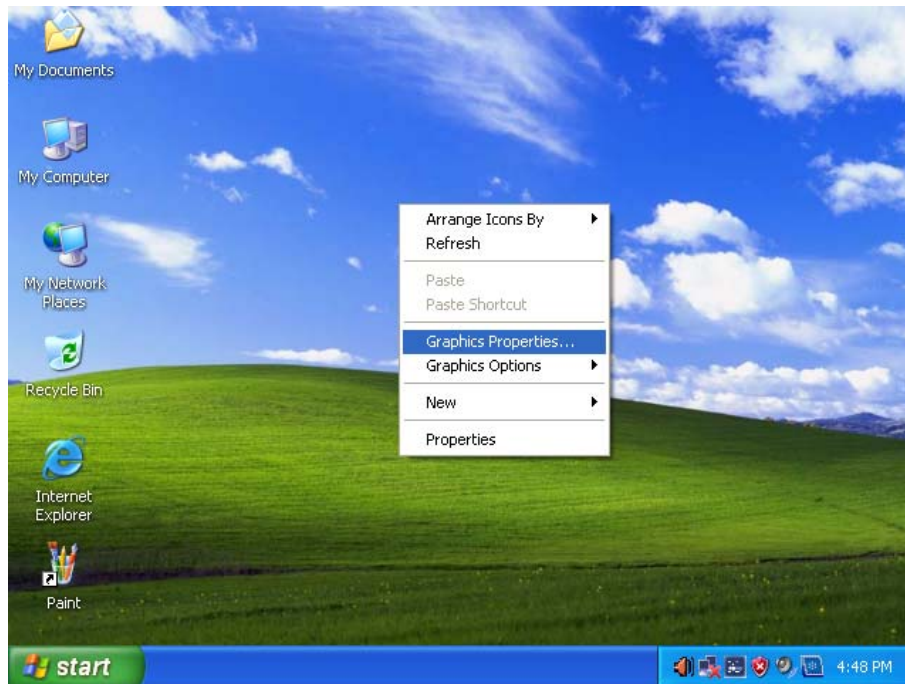
- Select “ ☒ Yes, I want to restart my computer now. ”, and choose “  ”



You need to restart your MID here.


3.9 TO ADJUST THE RESOLUTION OF SCREEN

- Click the right button of the mouse, and choose “ **Graphics Properties...** ”



- Select “ **Display Settings** ”, choose the resolution “ **800 x 480** ”, select “ **OK** ”.

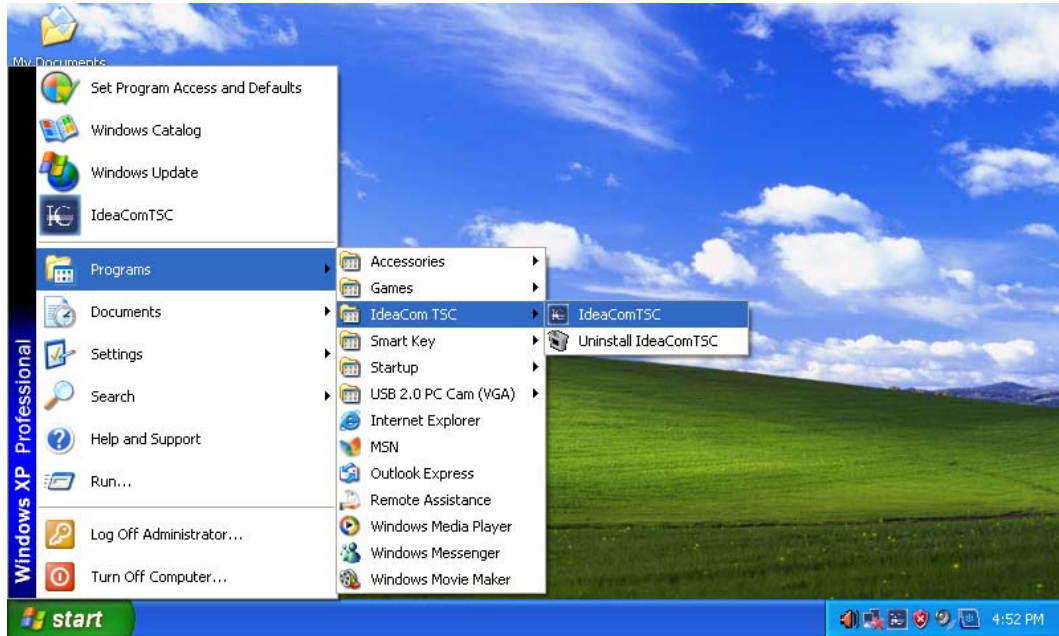


➤ Select “”



3.10 TO FIT THE SCREEN SETTING

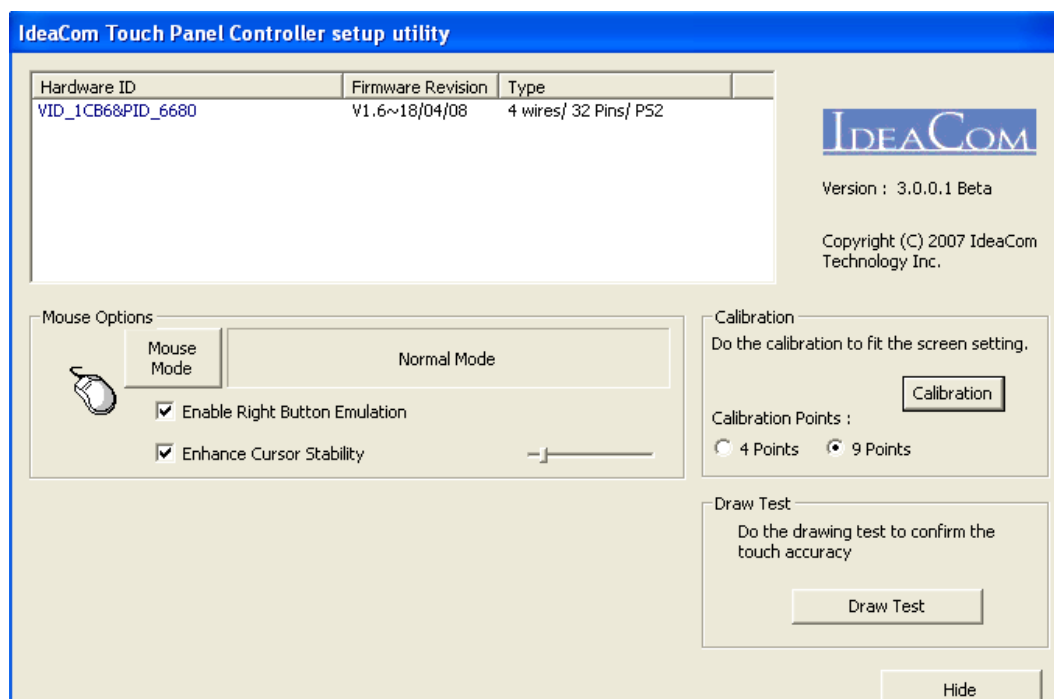
- Select “  start ”, and load the program “  IdeaComTSC ”



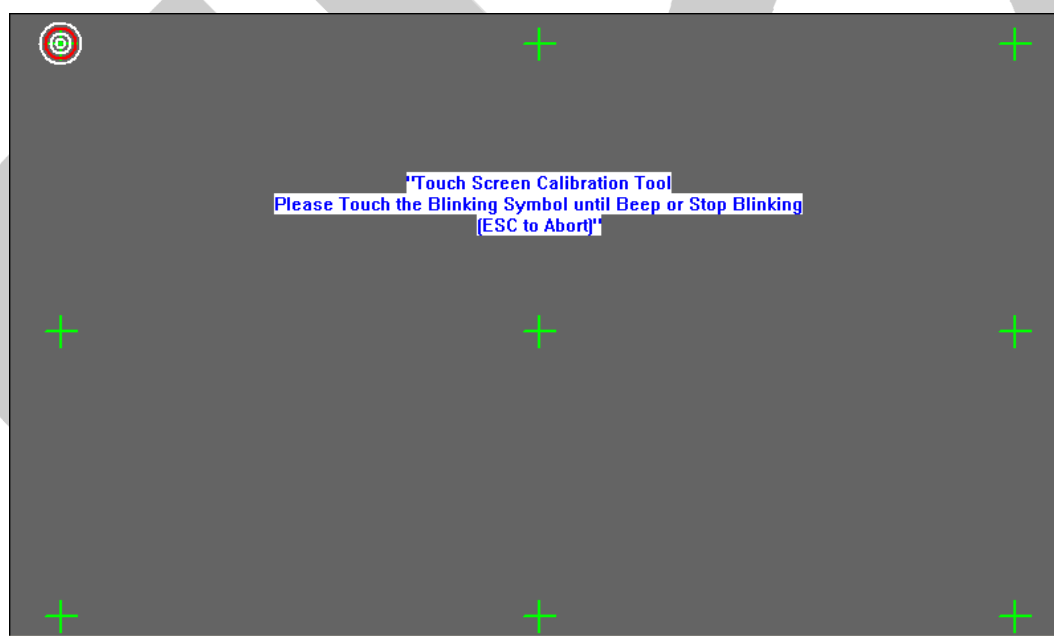
- Double click the icon “  ” in the right bottom tool bar.

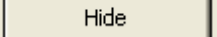


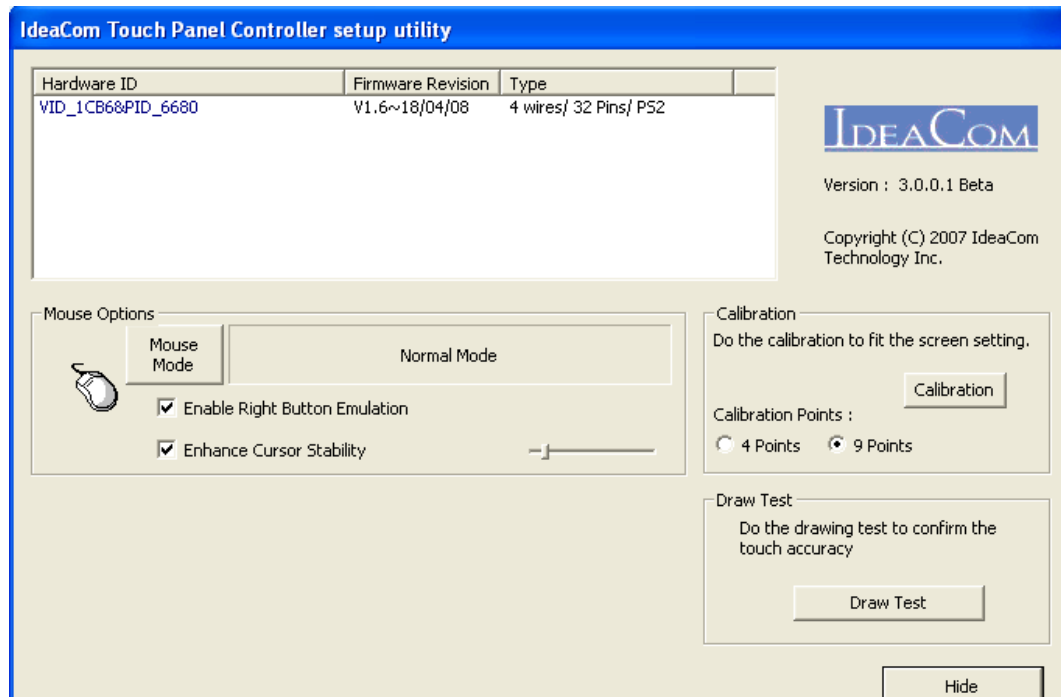
- Select “”





- Use the Stylus pen to touch the points as be shown on the screen to fit the screen.



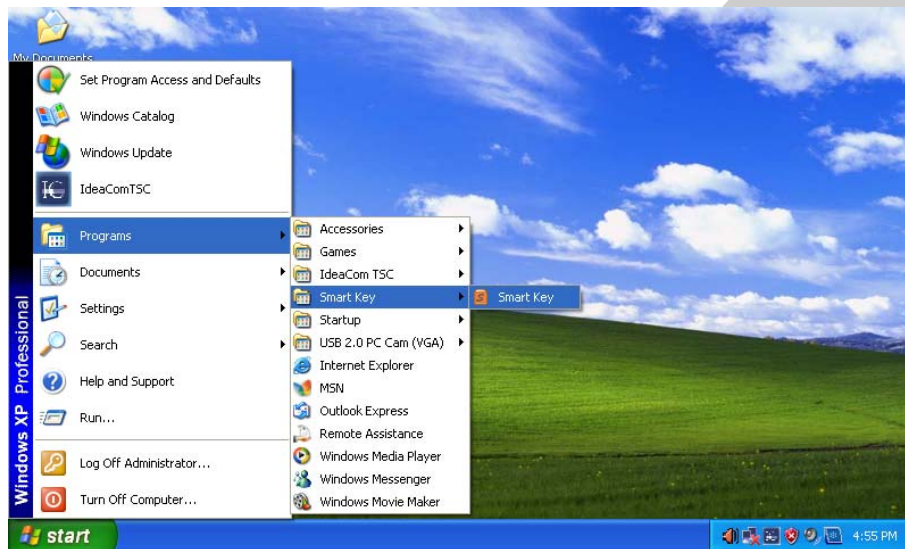
- Select “”


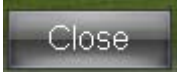


3.11 TO LOAD THE SMARTKEY APPLICATION SOFTWARE

- Select “ start” and choose the program “ Smart Key”,

Or press SmartKey for more than 3 seconds to load the program

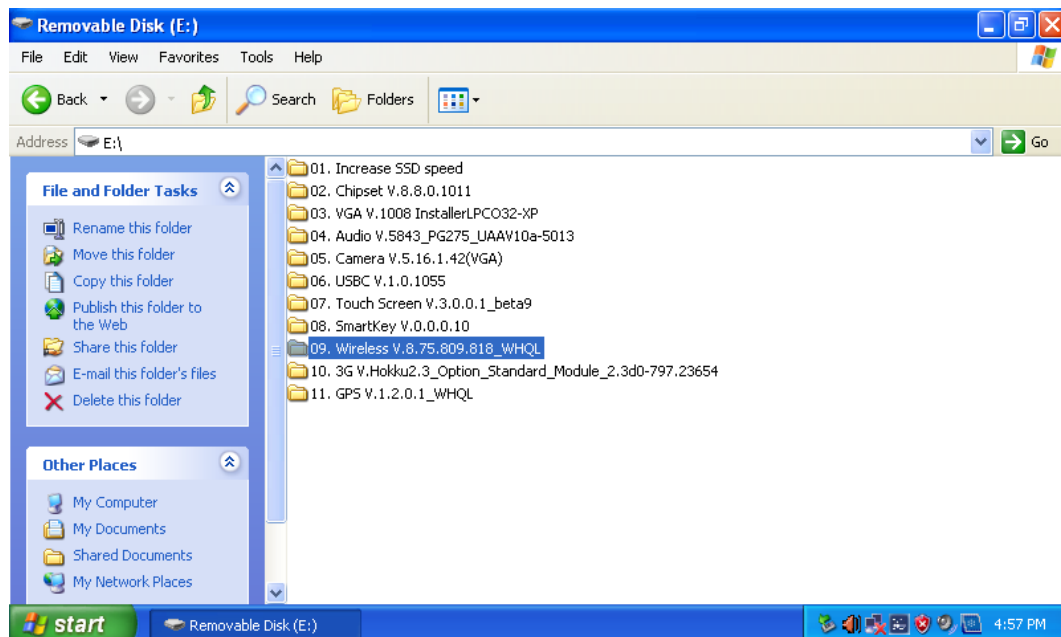


- To make sure the status of 3G, WiFi and Bluetooth are all “”,
And then select “”

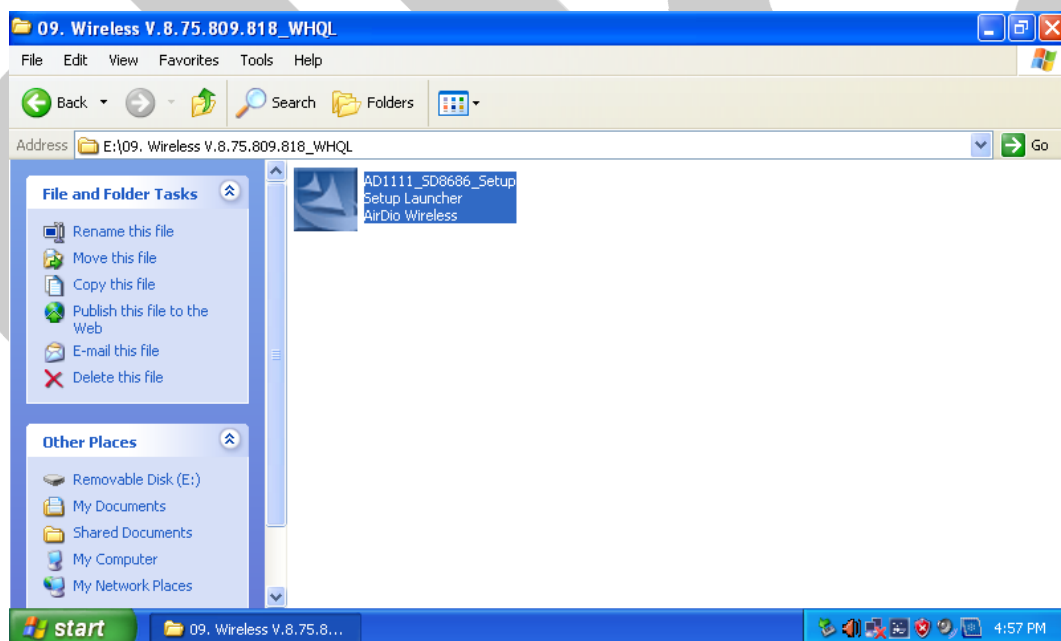


3.12 TO INSTALL THE WiFi DRIVER

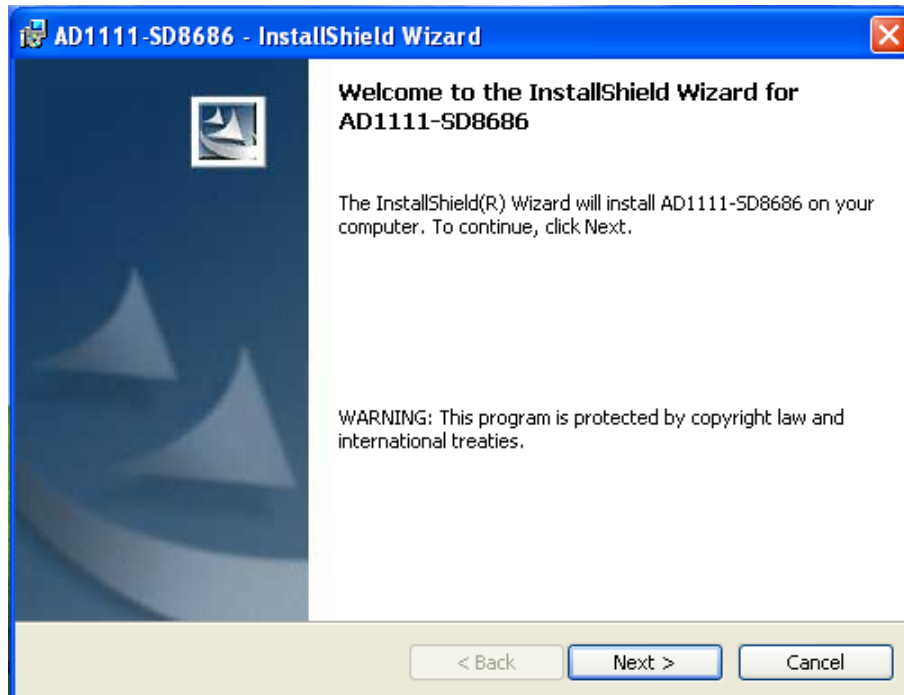
- Choose “09. Wireless V.8.75.809.818_WHQL”



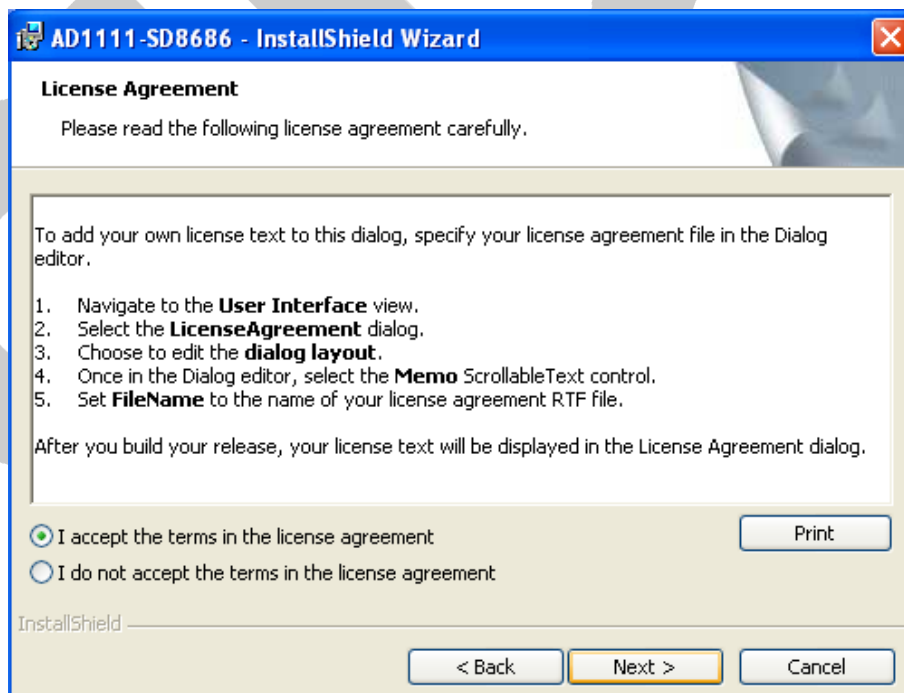
- Select “AD1111_SD8686_Setup
Setup Launcher
AirDio Wireless”



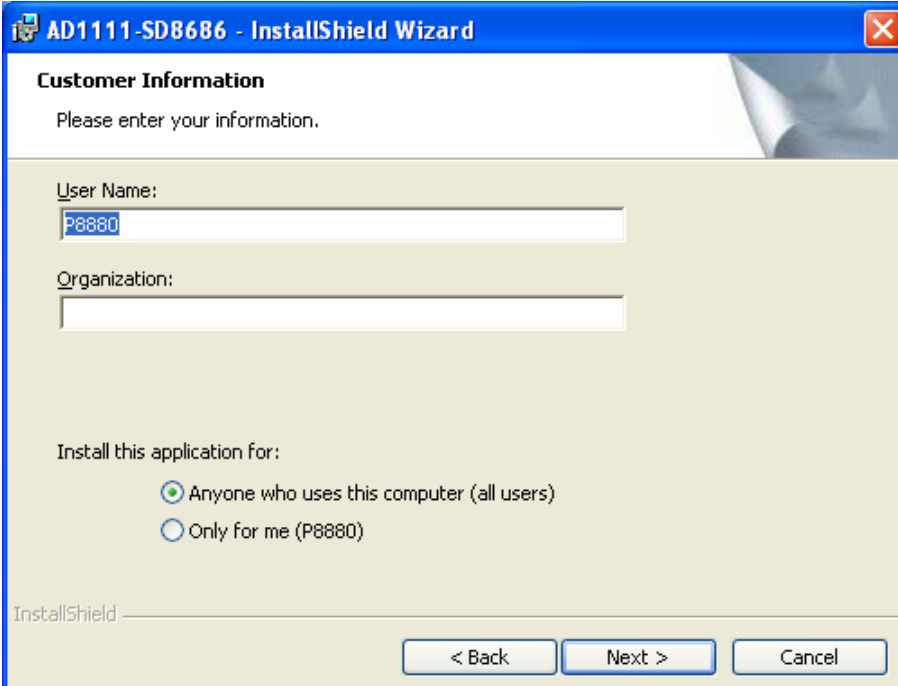
- Select “  ”



- Select “  ”



- Choose “”



AD1111-SD8686 - InstallShield Wizard

Customer Information

Please enter your information.

User Name:

Organization:

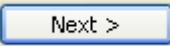
Install this application for:

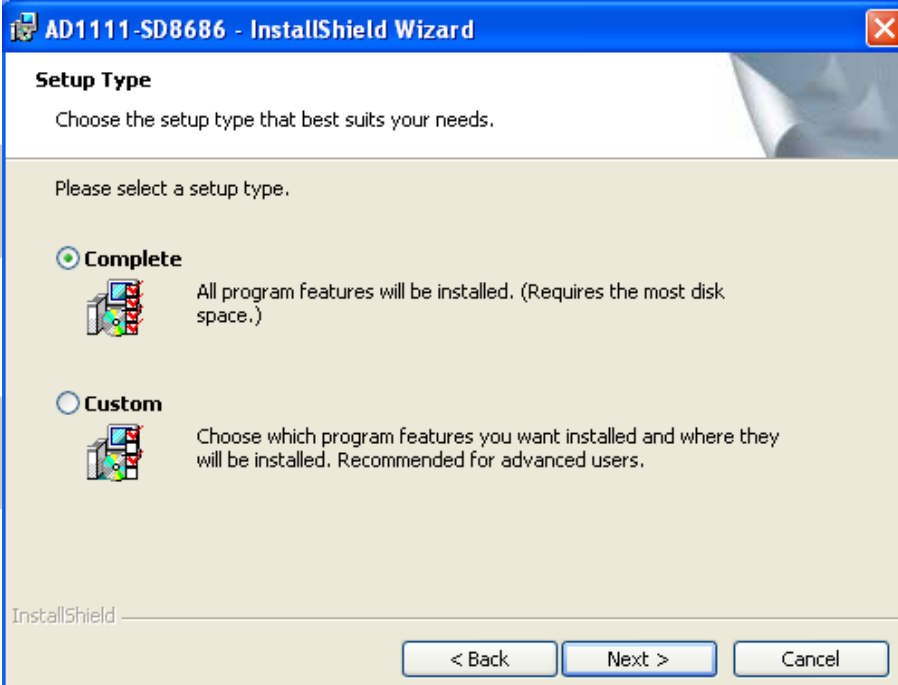
☒ Anyone who uses this computer (all users)

☐ Only for me (P8880)

InstallShield

< Back Next > Cancel

- Choose “”





AD1111-SD8686 - InstallShield Wizard

Setup Type

Choose the setup type that best suits your needs.

Please select a setup type.

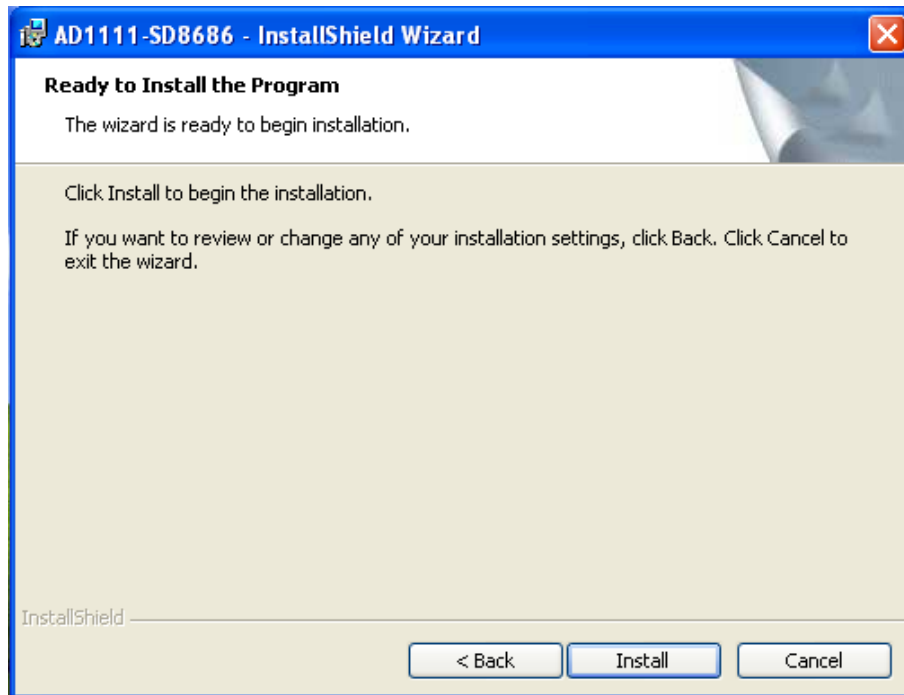
☒ **Complete**
 All program features will be installed. (Requires the most disk space.)

☐ **Custom**
 Choose which program features you want installed and where they will be installed. Recommended for advanced users.

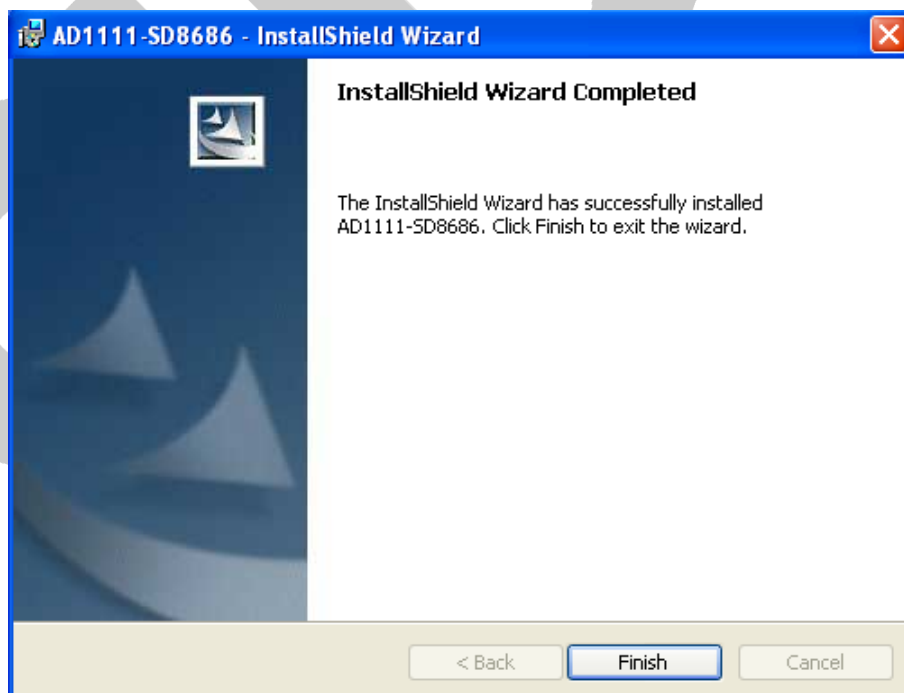
InstallShield

< Back Next > Cancel

- Choose “”

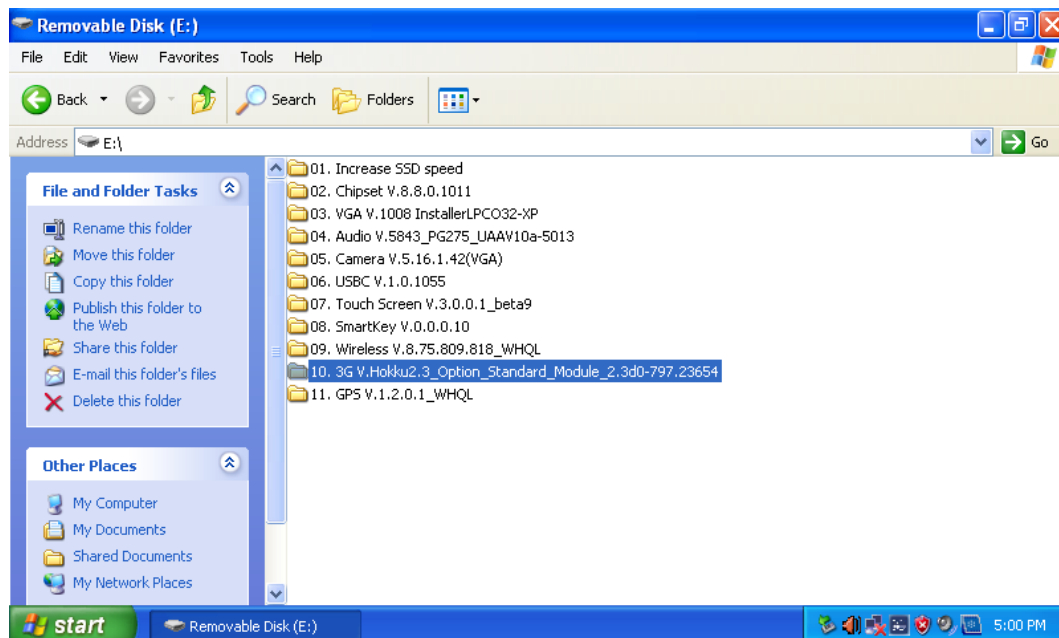


- Choose “”

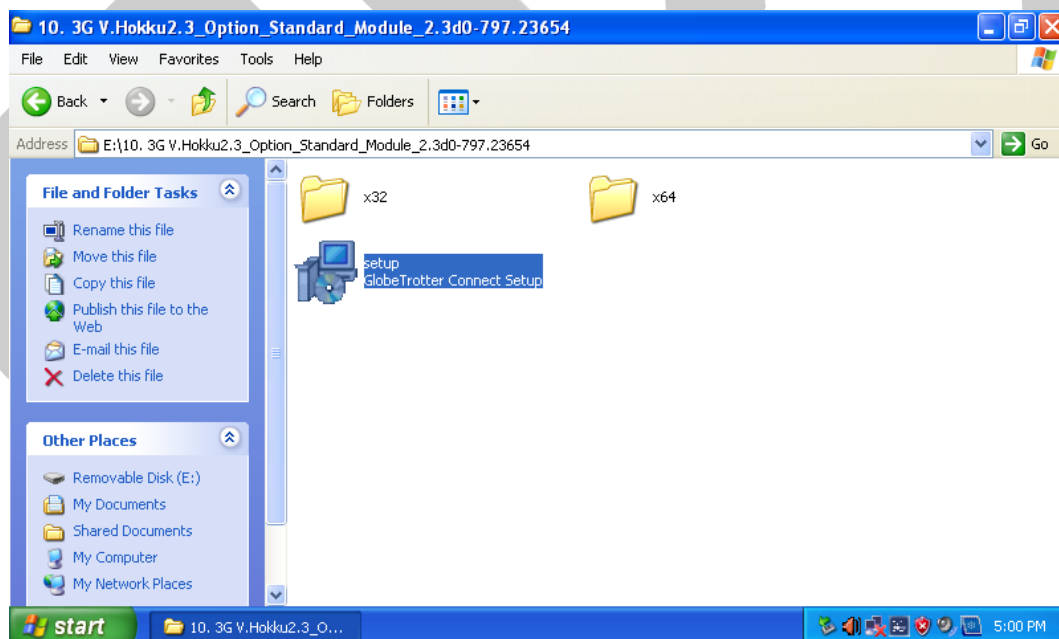


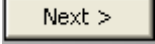
3.13 TO INSTALL THE 3G (WCDMA/HSDPA) DRIVER

- Select “10. 3G V.Hokku2.3_Option_Standard_Module_2.3d0-797.23654”

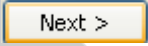


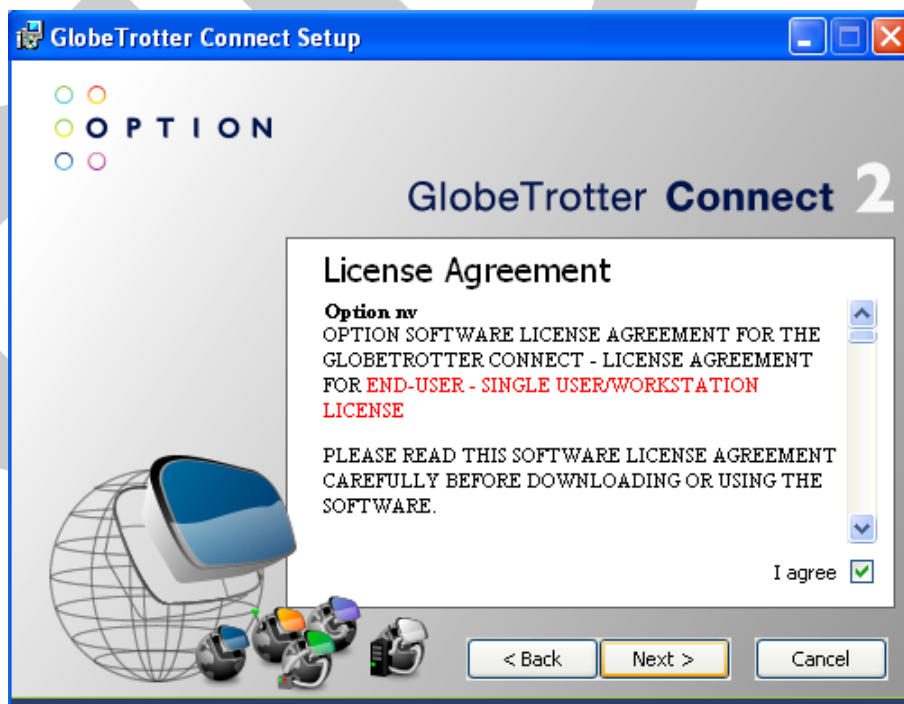
- Select “setup
GlobeTrotter Connect Setup”

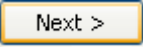


- Choose “  ”



- Choose “ I agree ☒ ”, and select “  ”



- Select “”



- Choose “”

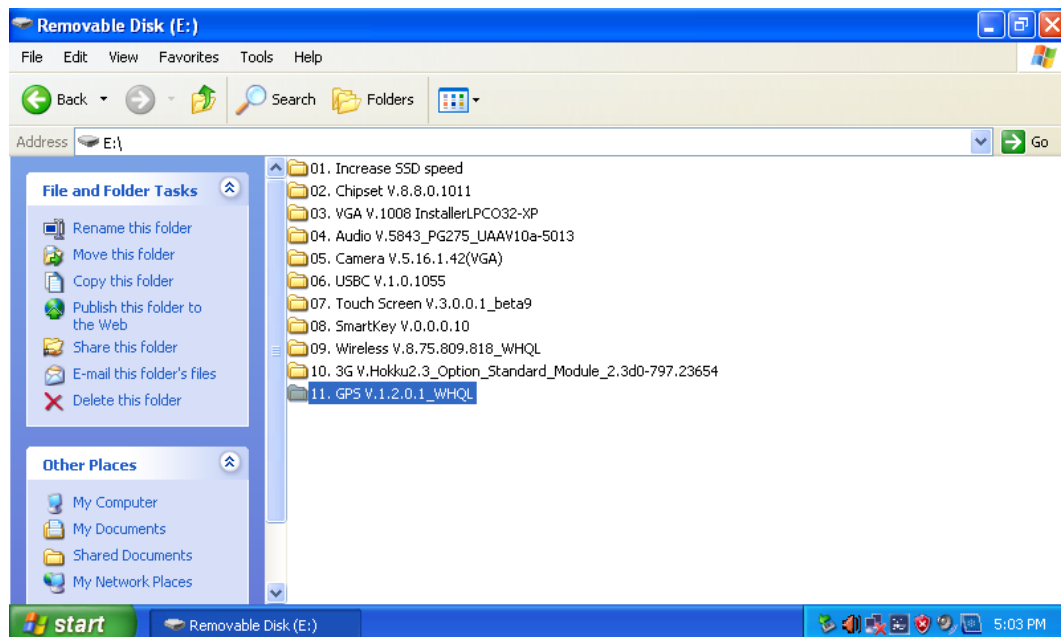


- Select “”

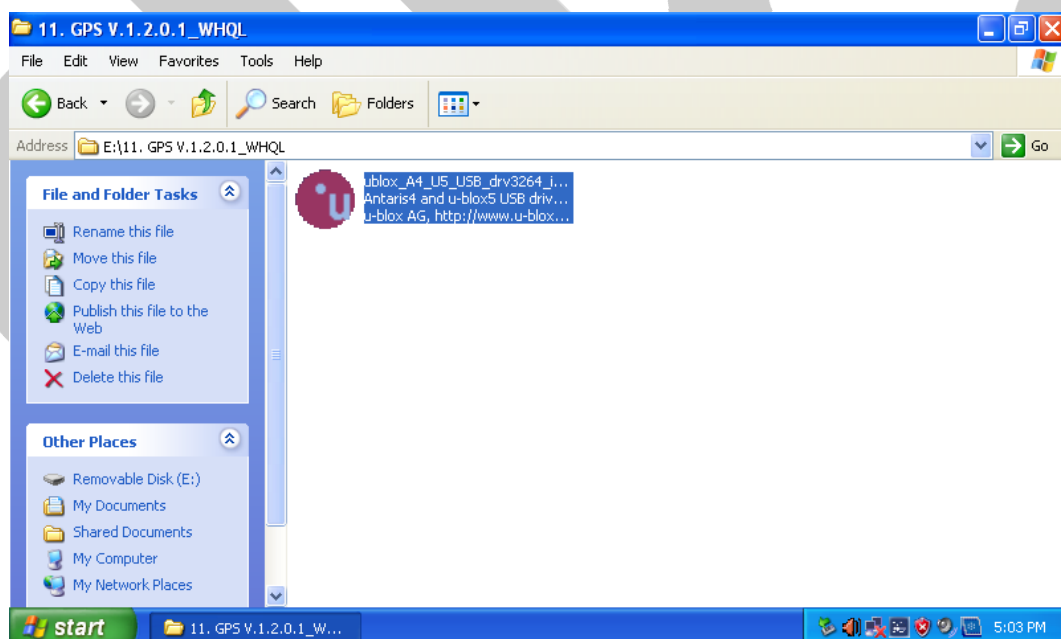


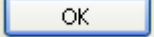
3.14 TO INSTALL GPS DRIVER

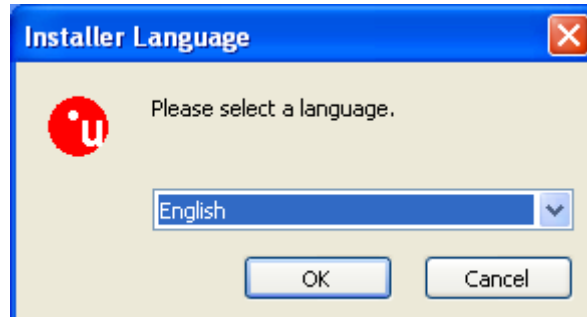
- Choose “11. GPS V.1.2.0.1_WHQL”



- Select “ublox_A4_U5_USB_drv3264_j...
Antaris4 and u-blox5 USB driv...
u-blox AG, http://www.u-blox...”

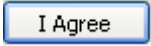


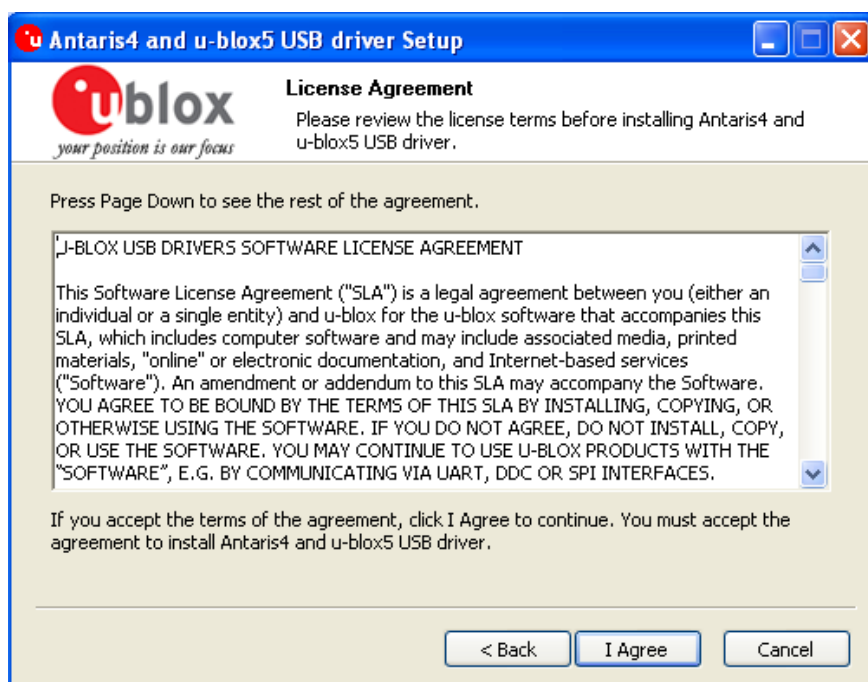
- Choose “  ”



- Select “  ”



- Choose “  ”



- Select “  ”

